

103

LEVEL BOOK

743

TABLE OF INCHES REDUCED TO DECIMALS OF A FOOT.

$\frac{1}{16}$.0052	$\frac{1}{16}$.1094	$\frac{1}{16}$.3177	$\frac{1}{16}$.4219	$\frac{1}{16}$.5260	$\frac{1}{16}$.6302	$\frac{1}{16}$.7344	$\frac{1}{16}$.8385	$\frac{1}{16}$.9427
$\frac{2}{16}$.0104	$\frac{2}{16}$.1146	$\frac{2}{16}$.3229	$\frac{2}{16}$.4271	$\frac{2}{16}$.5313	$\frac{2}{16}$.6354	$\frac{2}{16}$.7396	$\frac{2}{16}$.8438	$\frac{2}{16}$.9479
$\frac{3}{16}$.0156	$\frac{3}{16}$.1198	$\frac{3}{16}$.3281	$\frac{3}{16}$.4323	$\frac{3}{16}$.5365	$\frac{3}{16}$.6406	$\frac{3}{16}$.7448	$\frac{3}{16}$.8490	$\frac{3}{16}$.9531
$\frac{4}{16}$.0208	$\frac{4}{16}$.1250	$\frac{4}{16}$.3333	$\frac{4}{16}$.4375	$\frac{4}{16}$.5417	$\frac{4}{16}$.6458	$\frac{4}{16}$.7500	$\frac{4}{16}$.8542	$\frac{4}{16}$.9583
$\frac{5}{16}$.0260	$\frac{5}{16}$.1302	$\frac{5}{16}$.3385	$\frac{5}{16}$.4427	$\frac{5}{16}$.5469	$\frac{5}{16}$.6510	$\frac{5}{16}$.7552	$\frac{5}{16}$.8594	$\frac{5}{16}$.9635
$\frac{6}{16}$.0313	$\frac{6}{16}$.1354	$\frac{6}{16}$.3438	$\frac{6}{16}$.4479	$\frac{6}{16}$.5521	$\frac{6}{16}$.6563	$\frac{6}{16}$.7604	$\frac{6}{16}$.8646	$\frac{6}{16}$.9688
$\frac{7}{16}$.0365	$\frac{7}{16}$.1406	$\frac{7}{16}$.3490	$\frac{7}{16}$.4531	$\frac{7}{16}$.5573	$\frac{7}{16}$.6615	$\frac{7}{16}$.7656	$\frac{7}{16}$.8698	$\frac{7}{16}$.9739
$\frac{8}{16}$.0417	$\frac{8}{16}$.1458	$\frac{8}{16}$.3542	$\frac{8}{16}$.4583	$\frac{8}{16}$.5625	$\frac{8}{16}$.6667	$\frac{8}{16}$.7708	$\frac{8}{16}$.8750	$\frac{8}{16}$.9791
$\frac{9}{16}$.0469	$\frac{9}{16}$.1510	$\frac{9}{16}$.3594	$\frac{9}{16}$.4635	$\frac{9}{16}$.5677	$\frac{9}{16}$.6719	$\frac{9}{16}$.7760	$\frac{9}{16}$.8802	$\frac{9}{16}$.9844
$\frac{10}{16}$.0521	$\frac{10}{16}$.1563	$\frac{10}{16}$.3646	$\frac{10}{16}$.4688	$\frac{10}{16}$.5729	$\frac{10}{16}$.6771	$\frac{10}{16}$.7813	$\frac{10}{16}$.8855	$\frac{10}{16}$.9896
$\frac{11}{16}$.0573	$\frac{11}{16}$.1615	$\frac{11}{16}$.3698	$\frac{11}{16}$.4740	$\frac{11}{16}$.5781	$\frac{11}{16}$.6823	$\frac{11}{16}$.7865	$\frac{11}{16}$.8907	$\frac{11}{16}$.9948
$\frac{12}{16}$.0625	$\frac{12}{16}$.1667	$\frac{12}{16}$.3750	$\frac{12}{16}$.4792	$\frac{12}{16}$.5833	$\frac{12}{16}$.6875	$\frac{12}{16}$.7917	$\frac{12}{16}$.8959	$\frac{12}{16}$.9999
$\frac{13}{16}$.0677	$\frac{13}{16}$.1719	$\frac{13}{16}$.3803	$\frac{13}{16}$.4844	$\frac{13}{16}$.5885	$\frac{13}{16}$.6927	$\frac{13}{16}$.7969	$\frac{13}{16}$.9011	$\frac{13}{16}$.9999
$\frac{14}{16}$.0729	$\frac{14}{16}$.1771	$\frac{14}{16}$.3854	$\frac{14}{16}$.4896	$\frac{14}{16}$.5938	$\frac{14}{16}$.6979	$\frac{14}{16}$.8021	$\frac{14}{16}$.9063	$\frac{14}{16}$.9999
$\frac{15}{16}$.0781	$\frac{15}{16}$.1823	$\frac{15}{16}$.3906	$\frac{15}{16}$.4948	$\frac{15}{16}$.5990	$\frac{15}{16}$.7031	$\frac{15}{16}$.8073	$\frac{15}{16}$.9115	$\frac{15}{16}$.9999
$\frac{16}{16}$.0833	$\frac{16}{16}$.1875	$\frac{16}{16}$.3958	$\frac{16}{16}$.5000	$\frac{16}{16}$.6042	$\frac{16}{16}$.7083	$\frac{16}{16}$.8125	$\frac{16}{16}$.9167	$\frac{16}{16}$.9999
$\frac{17}{16}$.0885	$\frac{17}{16}$.1927	$\frac{17}{16}$.4010	$\frac{17}{16}$.5052	$\frac{17}{16}$.6094	$\frac{17}{16}$.7135	$\frac{17}{16}$.8177	$\frac{17}{16}$.9219	$\frac{17}{16}$.9999
$\frac{18}{16}$.0938	$\frac{18}{16}$.1979	$\frac{18}{16}$.4063	$\frac{18}{16}$.5104	$\frac{18}{16}$.6146	$\frac{18}{16}$.7188	$\frac{18}{16}$.8229	$\frac{18}{16}$.9271	$\frac{18}{16}$.9999
$\frac{19}{16}$.0990	$\frac{19}{16}$.2031	$\frac{19}{16}$.4115	$\frac{19}{16}$.5156	$\frac{19}{16}$.6198	$\frac{19}{16}$.7240	$\frac{19}{16}$.8281	$\frac{19}{16}$.9323	$\frac{19}{16}$.9999
$\frac{20}{16}$.1042	$\frac{20}{16}$.2083	$\frac{20}{16}$.4167	$\frac{20}{16}$.5208	$\frac{20}{16}$.6250	$\frac{20}{16}$.7291	$\frac{20}{16}$.8333	$\frac{20}{16}$.9375	$\frac{20}{16}$.9999

PLEASE RETURN TO
 GEauga COUNTY ENGINEER
 COURT HOUSE
 CHARDON, O.
 PHONE 250-X

COUNTY ROAD
 TROY CENTER- STEELE'S CROSSING

TROY TWP. SR. 700

GEAUGA COUNTY, OHIO

B. R. KENNEY
 CO. S.

1920

G. R. Hanna - Field work.

103

B. K. ELLIOTT COMPANY, PITTSBURG, PA.

DRAWING MATERIALS AND SURVEYING INSTRUMENTS

$$\begin{array}{r} 113943 \\ \underline{550} \\ 114493 \\ \underline{412} \\ 3.3 \end{array}$$

$$\begin{array}{r} 4463 \\ \underline{3762} \\ 5.01 \end{array}$$

$$\begin{array}{r} 4463 \\ \underline{4206} \\ 4.34 \end{array}$$

$$\begin{array}{r} 4463 \\ \underline{3914} \\ 5.47 \end{array}$$

$$\begin{array}{r} 414 \\ \underline{407} \\ 3982 \end{array}$$

$$\begin{array}{r} 414 \\ \underline{3982} \\ 23 \\ \underline{23} \\ 37.34 \end{array}$$

$$\begin{array}{r} 414 \\ \underline{4094} \\ 446 \end{array}$$

$$\begin{array}{r} 446 \\ \underline{73} \\ 7.3 \end{array}$$

$$\begin{array}{r} 4463 \\ \underline{4062} \\ 62 \end{array}$$

$$40$$

$$\begin{array}{r} 406 \\ \underline{23} \\ 381 \end{array}$$

$$\begin{array}{r} 446 \\ \underline{381} \\ 6.5 \end{array}$$

$$\begin{array}{r} 17 \\ \underline{168} \\ 93 \\ \underline{130} \\ 401 \end{array}$$

$$= 25 = 142$$

$$00-141$$

$$00-140$$

$$= 0.3-29$$

$$1141.91$$

$$1141.91$$

$$1141.91$$

$$1141.91$$

$$1141.91$$

$$\begin{array}{r} 113705 \\ \underline{738} \\ 114443 \\ \underline{3750} \\ 6.90 \end{array}$$

$$721$$

$$2.18$$

$$1.21$$

$$1.05$$

$$490$$

$$\begin{array}{r} .414 \\ \underline{436.0} \\ 5.4 \end{array}$$

$$\begin{array}{r} 414 \\ \underline{35.78} \\ 5.60 \end{array}$$

$$26$$

$$2.2$$

$$2.2$$

$$\begin{array}{r} 708 \\ \underline{540} \\ 1.68 \end{array}$$

1216,64

7	3,2	13,4	$\frac{0,0}{25}$	$\frac{+0,3}{18}$	$\frac{+0,4}{11}$	$\frac{-0,3}{28}$	$\frac{-0,6}{6}$	00	$\frac{+0,4}{10}$	$\frac{-0,1}{12}$	$\frac{+1,9}{17}$	$\frac{+2,6}{20-25}$
---	-----	------	------------------	-------------------	-------------------	-------------------	------------------	----	-------------------	-------------------	-------------------	----------------------

stone in Roadway

8	8,5	08,1	$\frac{+0,4}{25}$	$\frac{+0,3}{18}$	$\frac{+0,9}{12}$	$\frac{-0,4}{8}$	$\frac{-0,2}{5}$	00	$\frac{+0,1}{12}$	$\frac{-0,4}{14}$	$\frac{+3,0}{21}$	$\frac{+3,3}{25}$
---	-----	------	-------------------	-------------------	-------------------	------------------	------------------	----	-------------------	-------------------	-------------------	-------------------

stone

9	12,9	03,7	$\frac{-0,7}{25}$	$\frac{0,0}{12}$	$\frac{-0,4}{7}$	00	$\frac{+0,1}{12}$	$\frac{-0,2}{16}$	$\frac{+2,7}{25}$
---	------	------	-------------------	------------------	------------------	----	-------------------	-------------------	-------------------

stone

T.P. 095 1205 09 12.50 1204

B.M. 440 1200.69 Spike B.E. root 24" Maple 2d Lt. Sta 9+90

10	5,8	99,3	$\frac{+0,2}{25}$	$\frac{+1,2}{10}$	$\frac{-0,2}{8}$	00	$\frac{-0,1}{7}$	$\frac{+0,5}{15}$	$\frac{-0,7}{16}$	$\frac{+2,0}{19}$	$\frac{+3,3}{25}$
----	-----	------	-------------------	-------------------	------------------	----	------------------	-------------------	-------------------	-------------------	-------------------

stone

11	12,9	92,2	$\frac{+0,8}{25}$	$\frac{+1,8}{11}$	$\frac{-0,2}{7}$	00	$\frac{+0,3}{13}$	$\frac{-0,4}{15}$	$\frac{+3,8}{23}$	$\frac{+4,1}{25}$
----	------	------	-------------------	-------------------	------------------	----	-------------------	-------------------	-------------------	-------------------

T.P. 0.09 1193,08 12.10 1192.99

12	6,7	86,4	$\frac{+1,2}{25}$	$\frac{-0,1}{7}$	$\frac{+0,1}{6}$	00	$\frac{0,0}{18}$	$\frac{+0,9}{19}$	$\frac{+1,5}{25}$
----	-----	------	-------------------	------------------	------------------	----	------------------	-------------------	-------------------

13	11,5	81,6	$\frac{+0,8}{25}$	$\frac{+0,8}{11}$	$\frac{-0,4}{4}$	00	$\frac{+0,3}{14}$	$\frac{-0,1}{17}$	$\frac{+1,2}{25}$
----	------	------	-------------------	-------------------	------------------	----	-------------------	-------------------	-------------------

T.P. 0,16 1180 88 12,36 1180,72



118088

14		4.0	76.9	$\frac{+0.6}{25}$ $\frac{+0.5}{12}$ $\frac{-0.9}{7.4}$ 00 $\frac{00}{14}$ $\frac{-0.6}{17}$ $\frac{-0.3}{21}$ $\frac{-0.5}{25}$	
15		8.9	72.0	$\frac{-0.8}{25}$ $\frac{+0.9}{11}$ $\frac{-0.4}{9}$ $\frac{+0.1}{4}$ 00 $\frac{+0.5}{12}$ $\frac{-0.2}{14-18}$ $\frac{+0.2}{20-25}$	
16		12.8	68.1	$\frac{-0.7}{25}$ $\frac{-0.2}{5}$ 00 $\frac{+0.2}{11}$ $\frac{-1.4}{13-22}$ $\frac{+0.2}{25}$	
T.P.	0.32	1168.29	12.91	1167.97	
17		3.5	64.8	$\frac{-2.0}{25}$ $\frac{-0.8}{7}$ $\frac{-0.7}{5}$ 00 $\frac{+0.2}{11}$ $\frac{-1.2}{17}$ $\frac{-0.5}{18}$ $\frac{-0.9}{25}$	
18		6.3	62.0	$\frac{-0.8}{25}$ $\frac{-0.9}{14}$ $\frac{-0.1}{12}$ $\frac{-0.8}{9}$ $\frac{-0.2}{7}$ 00 $\frac{-0.2}{5}$ $\frac{-0.6}{11}$ $\frac{-0.4}{25}$	
19		7.9	60.4	$\frac{-1.5}{25}$ $\frac{-0.6}{11}$ $\frac{-1.0}{9}$ $\frac{-0.2}{7}$ 00 $\frac{-0.6}{11}$ $\frac{-1.2}{17}$ $\frac{-0.8}{25}$	
20		9.0	59.3	$\frac{-0.5}{25}$ $\frac{0.0}{5}$ 00 $\frac{-0.2}{8}$ $\frac{-0.7}{18}$ $\frac{-1.4}{14}$ $\frac{-1.1}{25}$	
T.P.	1.97	1161.08	9.18	1159.11	
B.M.		1.84	1159.24	E. root 24" soft Maple 25' Lt Sta 20+75	
21		3.5	57.6	$\frac{+0.9}{25}$ $\frac{+0.6}{16}$ $\frac{-0.3}{13}$ 00 $\frac{-0.4}{11}$ $\frac{-1.3}{13}$ $\frac{-1.6}{25}$	
22		6.6	54.5	$\frac{+0.4}{25}$ $\frac{-0.5}{18}$ $\frac{00}{16-12}$ $\frac{-0.2}{8}$ $\frac{-0.9}{12}$ $\frac{-2.5}{15}$ $\frac{-2.0}{25}$	

✓

116108

2.3		9.8	51.3	$\frac{+1.2}{25}$	$\frac{+1.0}{18}$	$\frac{-0.4}{13}$	$\frac{0.0}{7}$	$\frac{0.0}{7}$	$\frac{-0.6}{11}$	$\frac{-2.8}{15-21}$	$\frac{-2.4}{25}$				
24		13.1	48.0	$\frac{+1.2}{25}$	$\frac{+1.0}{18}$	$\frac{-0.3}{14}$	$\frac{0.0}{7}$	$\frac{0.0}{7}$	$\frac{-0.3}{9}$	$\frac{-1.6}{18}$	$\frac{-2.0}{25}$				
T.P.	0.60	1150.01	11.67	1149.44											
25		5.3	44.7	$\frac{+1.9}{25}$	$\frac{+2.0}{16}$	$\frac{-0.1}{13}$	$\frac{-0.3}{7}$	$\frac{0.0}{7}$	$\frac{-0.3}{10}$	$\frac{-1.8}{18}$	$\frac{-1.6}{25}$				
B.M.		6.31	1143.70	N.E. foot 2.8" Maple. 25' Lt Sta 25+95											
26	10-8-20 FINE	Hanna Grau Thompson	9.8	40.2	Average										
S.P.	0.39	1144.09		1143.70	$\frac{+2.1}{25}$	$\frac{+2.1}{19}$	$\frac{-0.5}{13}$	$\frac{0.0}{11}$	$\frac{0.0}{11}$	$\frac{-0.5}{13}$	$\frac{-2.7}{17-21}$	$\frac{-1.1}{25}$			
27			11.6	32.5	$\frac{+1.9}{25}$	$\frac{+0.3}{16-11}$	$\frac{+0.7}{10}$	$\frac{0.0}{7}$	$\frac{+0.7}{7}$	$\frac{+0.1}{12}$	$\frac{0.0}{25}$				
T.P.	0.19	1132.17	12.11	1131.98											
28			4.5	27.7	$\frac{-1.5}{25}$	$\frac{-1.2}{14}$	$\frac{+0.2}{11}$	$\frac{0.0}{7}$	$\frac{+0.2}{6}$	$\frac{-0.9}{8}$	$\frac{-1.3}{19}$	$\frac{+1.7}{25}$			
29			6.9	25.3	$\frac{-2.9}{25}$	$\frac{-2.7}{18}$	$\frac{-0.2}{11}$	$\frac{0.0}{7}$	$\frac{-0.1}{5}$	$\frac{-2.4}{10-21}$	$\frac{-0.4}{25}$				
+50			7.3	24.9	$\frac{-2.7}{25}$	$\frac{-2.9}{16}$	$\frac{-1.8}{11}$	$\frac{-0.8}{10}$	$\frac{+0.3}{8}$	$\frac{0.0}{7}$	$\frac{+0.1}{5}$	$\frac{-0.1}{7}$	$\frac{-2.3}{8}$	$\frac{-3.1}{19}$	$\frac{-0.4}{25}$
B.M.			6.9	25.3	Brq. floor										
			6.78	1125.39	+ N.E. Cor. Ewing N. Abut.										

same
stake in
Road bed



1132 17

30 7.6 24.6

$$\frac{-2.9}{25} \frac{-2.7}{12} \frac{+0.2}{8} 0.0 \frac{0.0}{5} \frac{-2.5}{8} \frac{-2.8}{20} \frac{+0.5}{25}$$

31 6.6 25.6

$$\frac{-0.9}{25} \frac{-0.3}{13} \frac{0.0}{7.1} 0.0 \frac{0.0}{5} \frac{-0.8}{7} \frac{-1.5}{16} \frac{-0.3}{23} \frac{+0.5}{25}$$

32 2.0 30.2

$$\frac{+1.5}{25-22} \frac{-0.4}{17} \frac{-0.6}{11} \frac{0.0}{7} 0.0 \frac{+0.1}{7} \frac{-0.7}{12} \frac{+1.5}{17} \frac{+2.0}{25}$$

T.P. 1137 1143 18 0.36 1131.81

33 7.0 36.2

$$\frac{1.8}{25} \frac{+1.4}{20} \frac{-0.5}{16} \frac{-0.2}{9} 0.0 \frac{0.0}{8} \frac{-0.2}{11} \frac{+0.8}{14-25}$$

34 4.1 39.1

$$\frac{-0.3}{25} \frac{-0.1}{16} \frac{-0.8}{10} \frac{+0.3}{8-6} 0.0 \frac{+0.1}{9} \frac{-0.8}{13} \frac{-0.6}{14-19} \frac{+0.2}{20-25}$$

35 2.8 40.4

$$\frac{-0.6}{25} \frac{-0.4}{15} \frac{-0.8}{10} \frac{+0.1}{8-6} 0.0 \frac{-0.2}{13} \frac{+0.5}{15} \frac{+0.7}{25}$$

T.P. 5.35 1147 72 0.81 1142.37

36 5.8 41.9

$$\frac{25}{25} \frac{-0.2}{13} \frac{-0.6}{12} \frac{-0.2}{10} 0.0 \frac{-0.1}{7} \frac{-0.3}{10} \frac{-0.4}{25}$$

37 4.8 42.8

$$\frac{+0.5}{25} \frac{+0.4}{18} \frac{-0.6}{13} \frac{-0.3}{11} 0.0 \frac{+0.2}{7} \frac{-0.9}{18} \frac{+0.7}{16-25}$$

38 5.5 42.2

$$\frac{+0.5}{25} \frac{+0.3}{14} \frac{-0.3}{11} 0.0 \frac{0.0}{8} \frac{-1.1}{12} \frac{-0.2}{15} \frac{-0.5}{25}$$

39 7.3 40.4

$$\frac{+0.1}{25} \frac{0.0}{16} \frac{-0.6}{13} \frac{-0.2}{10} 0.0 \frac{-0.1}{8} \frac{-0.7}{15} \frac{-0.4}{16} \frac{+0.4}{25}$$

B.M. 5.84 1141.88

E. foot 30" Maple. 25' Lt St 9 38 + 90

40 9.2 38.5

$$\frac{+1.7}{25} \frac{+1.5}{21} \frac{-1.1}{14} \frac{-0.2}{10} 0.0 \frac{-0.1}{8} \frac{-1.1}{11-14} \frac{+0.2}{17} \frac{+0.2}{25}$$

T.P. 0.69 1139.61 8.80 1138.92



1139 61

41			2.8	36.8	$\frac{+1.3}{25}$	$\frac{+1.0}{20}$	$\frac{-0.2}{17}$	$\frac{+0.1}{14}$	$\frac{0.0}{10}$	$\frac{0.0}{8}$	$\frac{-0.9}{11}$	$\frac{-0.7}{14}$	$\frac{-0.2}{16}$	$\frac{-0.2}{25}$
42			4.2	35.4	$\frac{+1.2}{25}$	$\frac{+0.9}{20}$	$\frac{-1.0}{14}$	$\frac{-0.2}{10}$	$\frac{0.0}{9}$	$\frac{-0.4}{12}$	$\frac{-1.5}{15}$	$\frac{-1.3}{15}$	$\frac{-0.7}{25}$	
43			5.3	34.3	$\frac{-0.1}{25}$	$\frac{-0.2}{20}$	$\frac{-0.7}{16}$	$\frac{-0.1}{12}$	$\frac{0.0}{9}$	$\frac{0.0}{8}$	$\frac{-1.2}{11}$	$\frac{-1.0}{17}$	$\frac{-2.0}{18}$	$\frac{-1.1}{21}$
B.M.			3.49	1136.12	x N.W. Cor. W. par. stone Culv. ← 3+50									
			4.8	34.8	Top culv.									
44			6.0	33.6	$\frac{-1.2}{25}$	$\frac{-1.0}{11}$	$\frac{-0.2}{8}$	$\frac{0.0}{9}$	$\frac{0.0}{7.4}$	$\frac{-0.9}{10}$	$\frac{-0.4}{12}$	$\frac{-0.7}{12}$	$\frac{-0.2}{19}$	$\frac{-0.2}{25}$
45			5.0	34.6	$\frac{-0.7}{25}$	$\frac{-0.5}{16}$	$\frac{-1.1}{14}$	$\frac{-0.3}{12}$	$\frac{0.0}{9}$	$\frac{-0.2}{8}$	$\frac{-0.8}{10}$	$\frac{-0.7}{16}$	$\frac{-0.1}{21}$	$\frac{-0.4}{28}$
T.P.	3.37	1138.18	4.80	1134.81										
T50			3.2	35.0	$\frac{-0.5}{25}$	$\frac{-0.7}{16}$	$\frac{-1.1}{13}$	$\frac{-0.5}{10}$	$\frac{0.0}{9}$	$\frac{-0.1}{8}$	$\frac{-0.8}{10}$	$\frac{-0.3}{14}$	$\frac{-1.0}{16}$	$\frac{-0.3}{18-25}$
46			3.5	34.7	$\frac{+0.1}{25}$	$\frac{-0.4}{15}$	$\frac{-1.1}{12}$	$\frac{-0.5}{9}$	$\frac{0.0}{9}$	$\frac{-0.3}{8}$	$\frac{-1.2}{11}$	$\frac{-0.1}{13}$	$\frac{+0.1}{22}$	$\frac{+1.0}{25}$
47			4.6	33.6	$\frac{-1.3}{25}$	$\frac{-1.2}{14}$	$\frac{-1.4}{12}$	$\frac{-0.3}{9}$	$\frac{0.0}{9}$	$\frac{0.0}{8}$	$\frac{-1.0}{11}$	$\frac{-0.7}{14}$	$\frac{-0.4}{19}$	$\frac{-0.4}{21}$
48			4.6	33.6	$\frac{-0.7}{25}$	$\frac{-0.8}{15}$	$\frac{-1.2}{13}$	$\frac{-0.5}{9}$	$\frac{0.0}{9}$	$\frac{-0.1}{7}$	$\frac{-1.0}{10}$	$\frac{-1.5}{17}$	$\frac{-0.8}{25}$	
49			5.5	32.7	$\frac{-0.8}{25}$	$\frac{-0.4}{14}$	$\frac{-0.9}{12}$	$\frac{-0.1}{9}$	$\frac{0.0}{9}$	$\frac{+0.2}{8}$	$\frac{-1.3}{13}$	$\frac{-1.3}{19}$	$\frac{-0.7}{25}$	
B.M.	8.53	1638.21	8.50	1129.68	W. root 16" Maple 25' Lt. Sta. 50 +									



1138 21

50 7.2 31.0

$$\frac{+0.4}{25} \frac{+0.1}{20} \frac{-0.3}{18} \frac{-0.7}{15} \frac{-0.2}{13} \frac{0.0}{11} \frac{0.0}{10} \frac{-0.3}{9} \frac{-1.1}{12} \frac{-0.5}{15} \frac{-0.3}{25}$$

51 8.1 30.1

$$\frac{-1.9}{25} \frac{-1.6}{13} \frac{-0.1}{12} \frac{+0.2}{7} \frac{0.0}{7} \frac{+0.2}{10} \frac{-0.9}{12} \frac{-1.8}{19} \frac{-1.4}{25}$$

Eclyp = +0.5

Temp B.M. 6.45 1131.76

+ on w. Head wall -

52 8.0 30.2

$$\frac{+0.6}{25} \frac{+0.3}{19} \frac{-0.7}{12} \frac{-0.2}{9} \frac{0.0}{9} \frac{-0.1}{7} \frac{-1.1}{8} \frac{-1.2}{16} \frac{+0.4}{25}$$

53 4.7 33.4

$$\frac{+0.8}{25} \frac{+0.6}{17} \frac{-0.6}{11} \frac{-0.3}{7} \frac{0.0}{7} \frac{-0.3}{8} \frac{-0.9}{9-12} \frac{-0.8}{13} \frac{-1.4-0.2}{17-22}$$

54 4.3 33.9

$$\frac{+0.9}{25} \frac{+0.7}{16} \frac{-0.4}{10} \frac{+0.1}{4} \frac{0.0}{4} \frac{-0.2}{9} \frac{-0.8}{13} \frac{-0.9}{15} \frac{-0.7+0.2}{18-22}$$

55 5.0 33.2

$$\frac{+1.6}{25} \frac{+1.2}{19} \frac{-0.1}{13} \frac{0.0}{13} \frac{-0.4}{9} \frac{-1.2}{14} \frac{-0.5}{16} \frac{+0.4}{25}$$

56 8.1 30.1

$$\frac{-1.0}{25} \frac{-1.4}{11} \frac{-0.4}{7} \frac{0.0}{7} \frac{-0.2}{8} \frac{-1.0}{10} \frac{-0.7}{25}$$

T.P. 1.64 1131.92

7.93 1134.28

57 3.5 28.4

$$\frac{-0.3}{25} \frac{-0.5}{18} \frac{-1.0}{16-10} \frac{-0.4}{7} \frac{0.0}{7} \frac{-0.1}{18} \frac{-1.5}{16} \frac{-1.6}{25}$$

58 7.5 24.4

$$\frac{+3.9}{25-22} \frac{+3.5}{20} \frac{-0.8}{12-8} \frac{-0.1}{6} \frac{0.0}{6} \frac{0.0}{9} \frac{-0.6}{12} \frac{-1.1}{19} \frac{-0.6}{23} \frac{+0.3}{25}$$

59 11.8 20.1

$$\frac{-1.4}{25} \frac{1.6}{12} \frac{-0.1}{6} \frac{0.0}{6} \frac{-0.1}{10} \frac{-1.0-1.1}{13-17} \frac{-0.8}{25}$$

B.P. 4.63 1124.31

12.24 1119.68

60 6.0 18.3

$$\frac{-2.2}{25} \frac{-2.9}{17} \frac{-0.9}{7} \frac{0.0}{8} \frac{0.0}{8} \frac{-0.2}{8} \frac{-1.3}{10} \frac{-2.2}{19} \frac{-1.8}{25}$$



112431

+45			5.3	19.0	$\frac{2.8-3.8}{25}$	$\frac{-3.1}{19}$	$\frac{+0.8}{11}$	$\frac{+0.2}{10}$	$\frac{0.0}{4}$	$\frac{+0.3}{5}$	$\frac{-1.1}{10}$	$\frac{-3.9}{18}$	$\frac{+0.3}{25}$	
			4.80	19.51	E Brq. s. end									
			4.80	19.51	" " N. "									
61			5.2	19.1	$\frac{-3.8}{25}$	$\frac{-3.1}{23}$	$\frac{-3.8}{18}$	$\frac{0.0}{7}$	$\frac{0.0}{10}$	$\frac{+0.3}{7}$	$\frac{-1.2}{10}$	$\frac{-3.5}{16}$	$\frac{-2.5}{19}$	$\frac{-1.2}{25}$
62			6.3	18.0	$\frac{-1.0}{25}$	$\frac{-0.6}{12}$	$\frac{-1.3}{11}$	$\frac{-0.4}{8}$	$\frac{0.0}{8}$	$\frac{-0.2}{10}$	$\frac{-1.2}{12}$	$\frac{-0.8}{21}$	$\frac{-0.8}{25}$	
63			4.0	20.3	$\frac{-0.6}{25}$	$\frac{-0.7}{19}$	$\frac{-1.1}{14}$	$\frac{-0.3}{12}$	$\frac{0.0}{9}$	$\frac{0.0}{6}$	$\frac{-0.1}{6}$	$\frac{-1.1}{10}$	$\frac{-0.9}{16}$	$\frac{-1.5}{18}$
T.P.	12.70	1136.52	0.49	1123.82										
64			11.6	24.9	$\frac{+2.8}{25}$	$\frac{-1.0}{16}$	$\frac{-0.8}{12}$	$\frac{-0.1}{6}$	$\frac{0.0}{6}$	$\frac{0.0}{6}$	$\frac{-3.7}{16}$	$\frac{-3.6}{25}$		
65			5.2	31.3	$\frac{+2.0}{25}$	$\frac{-0.8}{23}$	$\frac{-1.3}{16}$	$\frac{-0.4}{15}$	$\frac{-0.1}{14}$	$\frac{0.0}{12}$	$\frac{-0.3}{6}$	$\frac{-0.9}{8}$	$\frac{-1.8}{19}$	$\frac{-1.6}{25}$
-66			0.8	35.7	$\frac{+0.6}{25}$	$\frac{+0.3}{20}$	$\frac{-1.3}{17}$	$\frac{-0.2}{14}$	$\frac{0.0}{14}$	$\frac{-0.2}{6}$	$\frac{-2.8}{19}$	$\frac{-2.7}{25}$		
T.P.	4.88	1141.29	0.11	1136.41										
67			5.0	36.3	$\frac{-0.7}{25}$	$\frac{-1.3}{12}$	$\frac{-0.7}{11}$	$\frac{0.0}{4}$	$\frac{0.0}{4}$	$\frac{-0.4}{8}$	$\frac{-1.7}{15}$	$\frac{-1.7}{25}$		
B.M.			4.34	1136.95	E. root 20" Maple, 30' Lt. 66+20									
68			4.9	36.4	$\frac{-0.8}{25}$	$\frac{-1.1}{12}$	$\frac{-0.5}{9}$	$\frac{0.0}{9}$	$\frac{-0.4}{8}$	$\frac{-1.3}{10}$	$\frac{-1.0}{25}$			
69			4.3	37.0	same									
70			4.5	36.8	$\frac{-0.6}{25}$	$\frac{-1.1}{14}$	$\frac{-0.7}{13}$	$\frac{+0.1}{2}$	$\frac{0.0}{2}$	$\frac{-0.6}{18}$	$\frac{-1.1}{9}$	$\frac{-1.2}{25}$		

82 5.8 27.1

83 5.9 27.0

84 5.6 27.3
T.P. 5:45 1133 34 4.98 1127.89

85 5.7 27.6

86 5.3 28.0

87 4.8 28.5

88 6.9 26.4

89 9.7 23.6
T.P. 0:80 1123 62 10.52 1122.82

90 4.4 19.2

B.M. 1.05 1122.57

4.6 19.0

4.6 19.0

91 5.2 18.1

$$\frac{-1.2}{25-21} \frac{-1.0}{16} \frac{-1.1}{14} \frac{-1.0}{8} \frac{-0.5}{7} 00 \frac{-0.4}{13} \frac{-1.0}{16} \frac{-0.2}{19} \frac{+0.6}{25}$$

$$\frac{-0.6}{25-21} \frac{-1.2}{16} \frac{-0.9}{9} \frac{-0.3}{7} 00 \frac{-0.2}{13} \frac{-0.7}{15} \frac{+0.1}{25}$$

$$\frac{-0.6}{25-21} \frac{-1.0}{11} \frac{-1.4}{16} \frac{-0.3}{6} 00 \frac{+0.3}{4} \frac{-0.3}{15} \frac{-0.8}{16} \frac{0.0}{25}$$

$$\frac{-0.9}{25-21} \frac{-1.3}{16} 00 \frac{+0.1}{4} \frac{-0.5}{12} \frac{-0.8}{16} \frac{-0.4}{25}$$

$$\frac{-0.8}{25-21} \frac{-1.1}{13} \frac{-1.5}{12} \frac{-0.7}{9} 00 \frac{-0.2}{12} \frac{-0.8}{14} \frac{-0.2}{15-25}$$

$$\frac{-0.5}{25} \frac{-0.3}{14} \frac{-1.1}{13} \frac{-0.3}{9} 00 \frac{-0.2}{9} \frac{+0.3}{13} \frac{+0.2-0.6+0.5}{19} \frac{+0.4}{22-25}$$

$$\frac{+1.4}{25-18} \frac{-0.4}{12} \frac{+0.2}{10} 00 \frac{+1.1}{10} \frac{0.0}{12} \frac{-0.1}{22-25}$$

$$\frac{+1.8}{25} \frac{+1.6}{22} \frac{+0.3}{16} \frac{-0.1}{15} \frac{+0.3}{11} 00 \frac{+0.3}{11} \frac{-0.8}{15} \frac{+1.2}{20} \frac{+2.0}{25}$$

$$\frac{-0.3}{25} \frac{-0.5}{15} \frac{-1.2}{14} \frac{-0.5}{8} 00 \frac{0.0}{8} \frac{-0.8}{14} \frac{-0.4}{19} \frac{+2.8}{25}$$

X on N.W. Cor RR, Culv. parapet, Rt.,

S end floor Brq.

N " " "

$$\frac{-1.7}{25} \frac{-0.2}{12} \frac{-0.2}{10} 00 \frac{-0.2}{7} \frac{-0.6}{4} \frac{-0.7}{19} \frac{+3.0}{25}$$

92	10-9-20 30 ⁵ AM Fine weather	4.2	19.4
B.M.	10.73 11.33 30		1122.57
93		8.3	25.0
+50		5.8	27.5
94		4.8	28.5
95		3.9	29.4
96		3.1	30.2
97		3.3	30.0
T.P.	7.38 11.37.53	3.15	1130.15
98		7.9	29.6
99		7.7	29.8
100		7.0	30.5
101		6.1	31.4

$$\frac{+0.2}{25} \quad \frac{+0.4}{20} \frac{0.0}{12} \quad \frac{+0.4}{14} \quad 0.0 \quad \frac{-0.1}{4} \quad \frac{+0.3}{2} \quad \frac{+1.4}{21} \quad \frac{+3.6}{25}$$

$$\frac{+2.0}{25.24} \quad \frac{-0.6}{18} \quad \frac{-0.2}{17} \quad 0.0 \quad \frac{-0.1}{10} \quad \frac{-0.7}{12} \quad \frac{+0.2}{14} \quad \frac{+1.5}{25}$$

$$\frac{+1.0}{25} \quad \frac{+0.7}{22} \quad \frac{-0.8}{18.17} \quad \frac{-0.3}{16} \quad 0.0 \quad \frac{-1.1}{13} \quad \frac{-1.3}{15} \quad \frac{-0.9}{16} \quad \frac{-0.2}{25}$$

$$\frac{+0.1}{25} \quad \frac{-0.3}{18} \quad \frac{-0.6}{16} \quad \frac{-0.3}{15} \quad 0.0 \quad \frac{-0.4}{6} \quad \frac{-1.6}{14} \quad \frac{-0.8}{25}$$

$$\frac{-0.3}{25} \quad \frac{-0.9}{19} \quad \frac{-0.6}{18} \quad 0.0 \quad \frac{-0.2}{6} \quad \frac{-1.4}{8} \quad \frac{-1.0}{18} \quad \frac{-1.2}{16} \quad \frac{-0.2}{25}$$

$$\frac{-0.4}{25} \quad \frac{-0.9}{19} \quad \frac{-0.3}{17} \quad \frac{+0.1}{6} \quad 0.0 \quad \frac{-0.1}{5} \quad \frac{-0.9}{6} \quad \frac{-1.2}{12} \quad \frac{0.0}{25}$$

$$\frac{-0.5}{25} \quad \frac{-0.7}{20} \quad \frac{-0.3}{17} \quad 0.0 \quad \frac{0.0}{4} \quad \frac{-0.7}{6} \quad \frac{0.0}{13} \quad \frac{+0.7}{25}$$

$$\frac{-0.2}{25} \quad \frac{-0.4}{20} \quad \frac{+0.4}{9} \quad 0.0 \quad \frac{+0.1}{3} \quad \frac{-0.4}{4} \quad \frac{0.0}{9} \quad \frac{+1.3}{25}$$

$$\frac{-1.6}{25} \quad \frac{-1.0}{17} \quad \frac{-0.4}{15} \quad \frac{0.0}{7} \quad 0.0 \quad \frac{0.0}{3} \quad \frac{-0.7}{6} \quad \frac{-0.3}{8} \quad \frac{+0.1}{16} \quad \frac{+0.8}{25}$$

$$\frac{-0.9}{25} \quad \frac{-0.3}{14} \quad \frac{+0.4}{17} \quad \frac{0.0}{11} \quad 0.0 \quad \frac{-0.1}{4} \quad \frac{-0.6}{5} \quad \frac{-0.4}{7.15} \quad \frac{+0.7}{25}$$

$$\frac{-0.4}{25} \quad \frac{-0.5}{14} \quad \frac{-0.6}{17} \quad \frac{0.0}{16} \quad \frac{+0.3}{9} \quad 0.0 \quad \frac{+0.1}{3} \quad \frac{-0.2}{7} \quad \frac{+1.7}{25}$$

1137 53

S	102		4.0	33.5
B	B.M.		2.23	1135.30
S	103		1.3	36.2
+	T.P.	0.12	1142.96	0.69 1136.84
S	104		4.2	38.8
S	+25		4.1	38.7
S	105		5.1	37.9
S	106		7.3	35.7
T	107		8.4	34.6
S	108		7.6	35.4
S	109		6.9	36.1
10	110		6.3	36.7
	T.P.	5.40	1143.11	5.25 1137.11

✓

	$\frac{-0.2}{25} \frac{+0.1}{-17} \frac{0.0}{8} \frac{-0.2}{5} \frac{+0.5}{14} \frac{+2.0}{00}$
E. root 12" Evergreen 30' Lt.	102 + 40
	$\frac{+0.9}{25} \frac{-0.5}{15} \frac{-0.3}{11} \frac{0.0}{6} \frac{0.0}{6} \frac{-0.6}{7} \frac{0.0}{15} \frac{+0.6}{25}$
	$\frac{+0.2}{25} \frac{-0.2}{19} \frac{-0.6}{17} \frac{-0.2}{13} \frac{+0.3}{6} \frac{0.0}{6} \frac{-0.2}{9} \frac{+0.6}{25}$
	same
	$\frac{0.0}{25} \frac{-0.4}{19} \frac{-0.6}{17} \frac{-0.1}{10} \frac{0.0}{10} \frac{-0.7}{8} \frac{0.0}{18} \frac{+1.0}{25}$
	$\frac{1.1}{25} \frac{-1.3}{20} \frac{-1.4}{16} \frac{-0.4}{12} \frac{0.0}{5} \frac{0.0}{5} \frac{-0.3}{6} \frac{-1.0}{9} \frac{-0.5}{12} \frac{+1.3}{25}$
	$\frac{-0.8}{25} \frac{-0.5}{18} \frac{-0.6}{17} \frac{+0.3}{14} \frac{0.0}{14} \frac{+0.1}{5} \frac{-0.5}{9} \frac{-0.2}{11} \frac{+0.8}{25}$
	$\frac{+0.1}{25} \frac{-0.8}{21} \frac{-1.0}{19} \frac{-0.5}{16} \frac{+0.3}{6} \frac{0.0}{6} \frac{-0.5}{4} \frac{-1.2}{7} \frac{-0.7}{9} \frac{+0.7}{25}$
	$\frac{-0.7}{25} \frac{-1.1}{21} \frac{-0.3}{19} \frac{+0.4}{15} \frac{0.0}{7} \frac{-0.3}{4} \frac{-1.2}{7} \frac{-0.6}{8} \frac{+0.1}{14} \frac{+0.9}{25}$
	$\frac{+0.2}{25} \frac{-0.6}{19} \frac{+0.3}{7} \frac{0.0}{7} \frac{-0.3}{5} \frac{-0.6}{7} \frac{-0.8}{9} \frac{+0.9}{17} \frac{+1.5}{25}$

1143 11

111			5.3	37.8	$\frac{+0.4-0.3-0.2-0.5}{25}$ $\frac{+0.2}{20}$ $\frac{0.0}{19}$ $\frac{-0.5}{15}$ $\frac{+0.2}{7}$ $\frac{0.0}{5}$ $\frac{-0.3}{8}$ $\frac{-0.7}{10}$ $\frac{+0.5}{25}$ $\frac{+0.7}{25}$	
112			4.4	38.7	$\frac{+0.2}{25}$ $\frac{-0.5}{16}$ $\frac{0.0}{6}$ $\frac{-0.5}{10}$ $\frac{-0.8}{15}$ $\frac{+1.0}{25}$ $\frac{+1.6}{25}$	
+25			4.0	39.1	same	
113			4.8	38.3	$\frac{-0.4}{25-17}$ $\frac{-1.1}{17}$ $\frac{0.0}{8}$ $\frac{+0.2}{3}$ $\frac{0.0}{4}$ $\frac{-0.3}{9}$ $\frac{-0.9}{16}$ $\frac{+1.0}{25}$ $\frac{+1.4}{25}$	
114			6.5	36.6	$\frac{-0.9}{25}$ $\frac{-1.5}{16}$ $\frac{-0.3}{13}$ $\frac{+0.3}{4}$ $\frac{0.0}{6}$ $\frac{-0.2}{8}$ $\frac{-0.5}{12}$ $\frac{-0.6}{17}$ $\frac{+0.3}{25}$ $\frac{+0.7}{25}$	
B. M. +90 culv.			5.43	1137.68	w. root 18" Maple 30' RT. 114+12	
115			6.7	36.4	$\frac{-1.1}{25}$ $\frac{-1.2}{17}$ $\frac{-0.4}{14}$ $\frac{+0.2}{5}$ $\frac{0.0}{4}$ $\frac{-0.1}{7}$ $\frac{-0.9}{8}$ $\frac{-0.4}{25}$ $\frac{-0.3}{25}$	
116			6.8	36.3	$\frac{0.0-0.6-0.7}{25}$ $\frac{-1.1}{18}$ $\frac{-0.7}{17}$ $\frac{+0.1}{14}$ $\frac{0.0}{5}$ $\frac{-0.2}{4}$ $\frac{-0.8}{8}$ $\frac{+0.6}{10}$ $\frac{+1.5}{25}$	
117			7.4	35.7	$\frac{-1.2}{25}$ $\frac{-0.7}{18}$ $\frac{-1.0}{16}$ $\frac{-0.4}{15}$ $\frac{0.0}{5}$ $\frac{0.0}{5}$ $\frac{-0.1}{7}$ $\frac{-0.7}{9}$ $\frac{0.0}{25}$ $\frac{+0.4}{25}$	
T.P.	5,30	1141	86	6.55	1136.56	
118			6.3	35.6	$\frac{-0.8}{25}$ $\frac{-0.9}{19}$ $\frac{+0.2}{6}$ $\frac{0.0}{6}$ $\frac{-0.2}{5}$ $\frac{-0.8}{7}$ $\frac{+0.1}{14}$ $\frac{+0.6}{25}$	
119			5.3	36.6	$\frac{+0.5}{25}$ $\frac{-0.3}{18}$ $\frac{-0.7}{17}$ $\frac{+0.1}{6}$ $\frac{0.0}{6}$ $\frac{-0.4}{11}$ $\frac{+0.1}{14}$ $\frac{+0.9}{25}$ $\frac{+1.5}{25}$	
+50			5.0	36.9	$\frac{+0.6}{25}$ $\frac{+0.2}{19}$ $\frac{-0.3}{17}$ $\frac{+0.5}{6}$ $\frac{0.0}{6}$ $\frac{-0.6}{7-10}$ $\frac{-0.2}{11}$ $\frac{+0.7}{16}$ $\frac{+1.6}{22-25}$	

1141 86

120 5.4 36.5

$$\frac{+0.3}{25} \frac{-0.2}{17} \frac{-0.7}{15} \frac{+0.1}{5} 00 \frac{-0.6}{7-11} \frac{-0.3}{12} \frac{+1.4}{21} \frac{+1.7}{25}$$

121 7.2 34.7

+85 culv.

$$\frac{-0.9}{25} \frac{-1.0}{20} \frac{-0.8}{14} \frac{-1.0}{13} \frac{-0.6}{11} 00 \frac{-0.4}{6} \frac{-1.0}{10} \frac{0.0}{12} \frac{+0.7}{17} \frac{+1.0}{25}$$

122 8.0 33.9

$$\frac{-1.2}{25} \frac{-0.5}{12} \frac{-0.9}{11} \frac{-0.7}{10} 00 \frac{-0.1}{8} \frac{-0.7}{10} \frac{+0.7}{11} \frac{+0.6}{25}$$

123 7.5 34.4

$$\frac{-0.4}{25-22} \frac{-1.0}{16-14} \frac{-0.7}{11} 00 \frac{0.0}{9} \frac{+0.6}{13} \frac{+1.1}{25}$$

124 7.8 34.1

Temp B.M.

T.P 4.09 1140 62 5.33 1136.53

e culv.

5.5 35.1

$$\frac{-0.1}{25} \frac{-0.6}{13} 00 \frac{-0.1}{8} \frac{-0.7}{12} \frac{+0.6}{17} \frac{+1.2}{25}$$

x on N.W. cor W. par. Culv.

125 6.2 34.4

$$\frac{-0.8}{25} \frac{-1.0}{14} \frac{0.0}{9} 00 \frac{0.0}{8} \frac{-0.8}{11} \frac{-0.7}{25}$$

126 5.7 34.9

$$\frac{+0.7}{25} \frac{-0.5}{15} \frac{-0.9}{13} \frac{-0.5}{11} 00 \frac{-0.7}{8} \frac{-1.2}{12} \frac{-0.9}{17} \frac{+0.6}{25}$$

127 4.2 36.4

$$\frac{+0.3}{25} \frac{-0.2}{12} 00 \frac{-0.2}{9} \frac{-1.7}{13-15} \frac{-1.5}{17} \frac{-1.0}{21} \frac{0.0}{25}$$

B.M. 3.67 1136.95

E. root 24" Maple. 25' Lt. 127+05

128 3.9 36.7

$$00 \frac{-0.5}{25-20} \frac{-0.4}{7} \frac{0.0}{11} 00 \frac{-0.4}{10} \frac{-1.1}{14-16} \frac{+0.5}{20-25}$$

129 3.7 36.9

$$\frac{-0.7}{25-14} \frac{-0.9}{11} \frac{-0.6}{9} 00 \frac{-0.4}{14-17} \frac{-0.1}{19} \frac{+0.8}{21-25}$$

130 3.8 36.8

$$\frac{-0.4}{25} \frac{-1.0}{12} \frac{-1.3}{10} \frac{-0.6}{7} 00 \frac{+0.7}{4} \frac{-0.1}{12} \frac{-0.9}{17} \frac{+1.3}{22} \frac{+1.7}{25}$$

P.M. S.P 7.60 1144.55 1136.95

✓

114455

131 8.6 36.0

$$\frac{-1.6}{25} \frac{-1.0}{14} \frac{-0.1}{7} 00 \frac{+0.1}{8} \frac{0.0}{9} \frac{-0.9}{15} \frac{-0.8}{25}$$

25 caly,

132 7.9 36.7

$$\frac{-0.7}{25} \frac{-0.1}{10} 00 \frac{+0.7}{7} \frac{-0.6}{11} \frac{+0.1}{25}$$

133 5.8 38.8

$$\frac{+0.6}{25} \frac{-0.2}{10} 00 \frac{0.0}{10} \frac{+1.0}{13-15} \frac{+1.9}{19} \frac{+2.5}{25}$$

134 3.2 41.4

$$\frac{+0.1}{25-11} \frac{-0.4}{8} 00 \frac{-0.3}{10} \frac{+1.2}{25}$$

+50 2.2 42.4

$$\frac{-0.8}{25} \frac{-0.3}{10} \frac{-0.5}{8} 00 \frac{+0.3}{12} \frac{+0.9}{17} \frac{+1.2}{25}$$

135 3.1 41.5

$$\frac{-0.6}{25} \frac{-0.1}{14} \frac{-0.5}{10} 00 \frac{-0.1}{11} \frac{-0.3}{12-20} \frac{+0.7}{25}$$

136 3.5 41.1

$$\frac{-1.0}{25} \frac{-0.5}{8} \frac{-0.3}{5} 00 \frac{+0.7}{6} \frac{+0.1}{15} \frac{-0.7}{19} \frac{-0.3}{25}$$

T.P. 4.55 114601

3.09 1141.46

137 5.2 40.8

$$\frac{+0.7}{25} \frac{+0.5}{10} \frac{-0.3}{8} 00 \frac{+0.3}{6} \frac{+0.7}{18} \frac{-0.7}{20} \frac{+0.4}{23-25}$$

+75 3.8 42.2

$$\frac{+0.7}{25} \frac{+0.1}{8} \frac{-0.7}{6} 00 \frac{+0.7}{6} \frac{-0.4}{15} \frac{-1.7}{21} \frac{-0.4}{25}$$

138 4.2 41.8

$$\frac{+0.7}{25} \frac{-0.1}{4} 00 \frac{+0.7}{9} \frac{-0.7}{15} \frac{-1.5}{21} \frac{-0.3}{25}$$

139 5.0 41.0

$$\frac{-0.9}{25} \frac{-0.8}{8} \frac{-0.7}{6} 00 \frac{+0.7}{19} \frac{-0.4}{21} \frac{+1.3}{25}$$

✓

1146 01

140

5.3 40.7

$$\frac{-1.1}{25} \frac{-0.7}{8} \frac{-1.0}{7} \frac{-0.200}{3} \frac{+0.3}{6} \frac{+0.7}{19} \frac{-0.8}{23} \frac{+0.2}{25}$$

141

5.5 40.5

$$\frac{-0.7}{25} \frac{-1.2}{12} \frac{-1.8}{9} \frac{-0.8}{6} 00 \frac{0.0}{10} \frac{-0.3}{15} \frac{+0.8}{17} \frac{+1.2}{25}$$

142

7.8 38.2

$$\frac{-2.2}{25} \frac{-1.5}{6} \frac{-0.3}{5} 00 \frac{0.0}{2-16} \frac{+0.3}{25}$$

End

6.8 39.2

Temp.
B.M.

6.59 1139.12



x N.E. Cor E. par-

Culverts

Sta B5. H. I F.S. Elev.

142+52

4.38

1143.80

1139.42

5.4 1138.9

140+10

12" Iron pipe & V.p. 20'

131+25

Sta 131E 4.9

1140.9

1136.0

4.8 1136.1

124+60

3 x 3 Stone Box

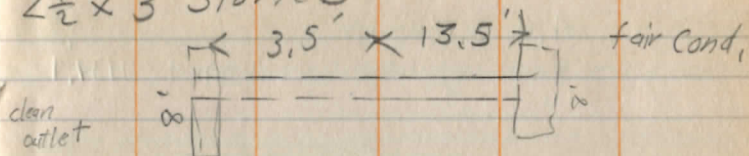
B.M. 2.84

1139.37

1136.53

4.3 1135.1

2 1/2 x 3 Stone Box



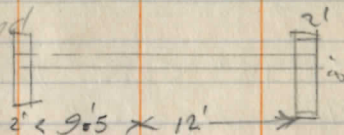
$\frac{-4.4}{2.5}$ $\frac{-5.0}{5}$ $\frac{0.0}{3.5}$ 0.0 $\frac{+0.4}{1.3}$ $\frac{+1.0}{1.4}$ $\frac{-4.8}{1.6}$ $\frac{-1.1}{2.5}$

not Reqd.

14" V. pipe 18'

$\frac{3.2}{2.5}$ $\frac{-2.7}{9}$ $\frac{-0.1}{7}$ 0.0 $\frac{0.0}{9}$ $\frac{-2.6}{1.1}$ $\frac{-3.2}{1.7}$

Very Good Cond



$\frac{-4.1}{1.2}$ $\frac{+0.5}{9}$ 0.0 $\frac{+0.3}{1.2}$ ~~1.0~~

Top Cover

121+82 12" CIP, ^{±VP,} 20' Long,

⊕ 122 4.6 1138.5 1133.9
4.4 1134.1

117+45 12" C.I.P., 18' (1)

⊕ 118 4.9 1140.5 1135.6
4.7 1135.8

114+90 pipe V.1
Not Reg.

106+75 plank Box

⊕ 107 5.4 1140.0 1134.6
5.2 1134.8

99+25 12" Cor. 16ft. good

⊕ 99 4.8 1134.6 1129.8
4.6 1130.0

180
Good

← $\frac{-2.0}{25}$ $\frac{-2.4}{12}$ $\frac{-0.9}{11}$ 00 $\frac{-0.5}{9}$ $\frac{-2.0}{10}$ $\frac{-1.5}{15}$

$\frac{-1.5}{20}$ $\frac{-1.7}{14}$ $\frac{-1.0}{13}$ 00 $\frac{-0.4}{4}$ $\frac{-1.7}{5}$ $\frac{-0.9}{18}$

Reqd 12" pipe

← $\frac{-1.2}{15}$ $\frac{-0.9}{12}$ $\frac{-0.2}{11}$ 00 $\frac{-0.1}{2}$ $\frac{-1.1}{3}$ $\frac{-0.7}{15}$

$\frac{-2.4}{25}$ $\frac{-2.0}{15}$ $\frac{-0.4}{13}$ 00 $\frac{-0.2}{2}$ $\frac{-2.0}{3}$ $\frac{+0.7}{20}$

50+45 $\frac{1}{2}$ span

B.M. 119 1123.76 1122.57

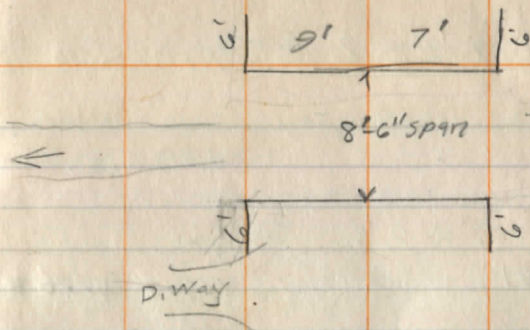
Brq seat S. Abut	6.0	1117.76
" " N. "	5.9	1117.86
Bottom Crk. E. side	9.1	1114.7
" " W. "	8.8	1115.0

81+52 2 $\frac{1}{2}$ x 3 Stone Box

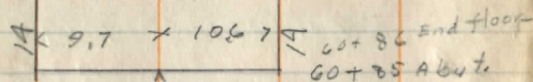
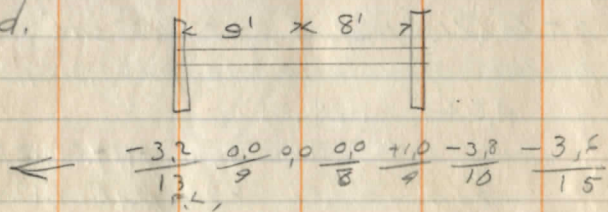
B.M. 331	1132.51	1129.20
	4.7	1128.3
Top cover stone	4.7	1127.74

Super structure is 30' span - 16' W.
Iron Bridge, Plank floor (poor)

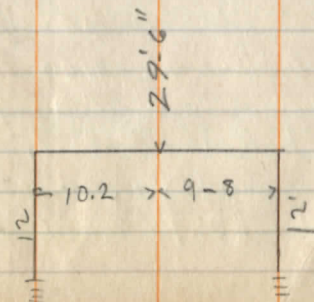
1920
Stone Abuts
Good
plank floor
Poor-



Good.



O.K. No Work



51+06 2' x 2' Stone Box

B.M. 2.53 1134.29 1131.76
4.23 1130.06

43+50 3' x 2 1/2' Stone Box

B.M. 2.91 1139.03 1136.12

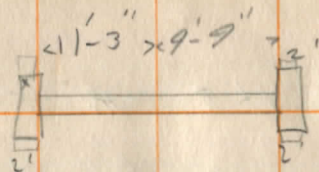
Top of cover. = 4.16 1134.57

29+60 S. Abut. of 20' bridge
super-structure is poor.

B.M. 4.52 1129.91 1125.39
Brdg seat N. Abut 5.61 1124.30
5.65 1124.26

0+? x Rd culv,
10 NEW,

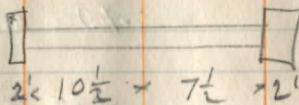
Exc.



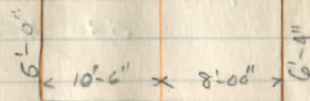
O.K.

top of cover

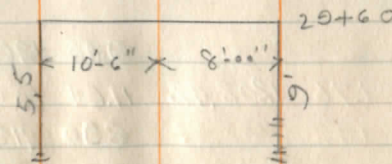
Exc. Cond.



Stone Abut's
Good
Point.



20'



Slope Stakes

Rebok } Clear
Walter } 5/5/22
Rose }

Sta.	+R.	H.I.	-R.	Elev	Sub G	Lt.	C	R.R.
B.M.	3.85	1230.35		1226.50				
1.			4.70	1223.65	1226.50	F.20 14.7	F.0.0	F.10 16.3
2			4.90	1225.45	1226.80	F.13 15.8	F.1.4	E.1.4 16.6
3			5.00	1225.35	1226.08	E.1.7 15.2	F.0.8	E.1.0 16.3
4			6.40	1223.95	1224.30	F.0.8 16.5	F.0.4	F.0.5 17.0
T.P.	3.36	1227.14	6.57	1223.78				
5			5.80	1221.30	1221.85	F.0.7 16.7	F.0.5	C.1.0 19.3
6			9.50	1217.60	1218.42	F.0.3 17.3	F.0.8	C.1.9 20.6
T.P.	2.64	1220.86	8.92	1218.22				
7			7.50	1213.36	1214.32	F.0.4 17.1	F.0.9	C.1.6 20.1
T.P.	2.11	1212.30	10.67	1210.19				
8			4.30	1208.00	1209.62	F.0.7 16.7	F.1.6	C.1.4 19.8
9			9.00	1203.30	1204.40	F.0.6 16.3	F.1.1 16.0	F.0.7 16.3
T.P.	1.76	1202.42	11.64	1200.66				
10			3.80	1198.50	1199.10	C.1.1 19.4	F.0.5	C.2.7 21.3
11			10.40	1192.00	1193.80	0.0 17.2	F.1.3	C.1.5 20.9
T.P.	0.86	1191.73	11.55	1190.87				

slope stakes
set 1' back

MINE Poles

0.2 m. pole

pole

B.M. 9+90

Sta	+P.	H. I. 1171.73	-R.	Elev.	Grade
12			5.70	1186.00	1188.50
13			10.40	1181.35	1183.20
T.P.	0.53	1180.22	12.04	1179.69	
14			3.50	1176.70	1177.90
15			8.20	1172.00	1173.02
	0.89	1170.59	10.52	1169.70	
16			2.70	1167.90	1169.20
17			5.90	1164.70	1165.80
18			8.40	1162.20	1162.53
T.P.	1.77	1163.61	8.75	1161.84	
19			3.40	1160.20	1161.10
20			4.50	1159.10	1158.72
21			6.30	1157.30	1157.77
B.M.			4.41	1159.20	
T.P.	1.42	1158.34	6.69	1156.92	
22			4.20	1154.10	1155.17
23			7.30	1151.00	1152.00

Make notes

Lt 20+75

Lt.	C.	Rt.
F.16 154	F.25	F.23 142
F.10 163	F.19	E.17 152
F.04 172	F.12	F.16 154
F.07 167	E.10	F.12 160
F.16 154	E.13	F.24 142
F.19 143	F.11	F.21 146
F.14 157	F.08	F.11 161
F.19 148	F.09	E.19 143
F.06 162	F.06	F.18 152
C.03 182	F.05	F.18 151
F.11 161	F.11	F.08 154
C.02 181	F.10	F.36 152

Sta	+R	HI	-R	Elev	Grade
TP	2.22	1150.15	10.41	1147.93	
24			2.30	1147.90	1148.75
25			5.50	1144.70	1144.89
BM			6.47	1143.68	
TP	2.89	1143.27	9.77	1140.38	
26			3.40	1139.90	1139.80
BM	0.92	1144.60		1143.68	
TP	1.83	1135.79	10.64	1133.96	
27			5.60	1132.20	1134.10
28			7.90	1127.90	1128.76
TP	2.95	1129.54	9.20	1126.59	
29			4.20	1125.30	1125.91
BM			4.22	1125.32	
30			4.90	1124.60	1125.55
+75			4.40	1125.10	1126.15
31			3.90	1125.60	1126.90
TP	9.53	1138.68	0.39	1129.15	
32			8.60	1130.10	1131.55
33			2.50	1136.20	1136.35
TP	7.05	1144.69	1.04	1137.64	
+50			6.80	1137.90	1138.33
34			5.60	1139.20	1139.45

LT	C	RI
$\frac{C.02}{181}$	F.08	$\frac{F.21}{146}$
$\frac{C.19}{206}$	F.02	$\frac{F.18}{151}$
LT 327.25195		
$\frac{C.19}{206}$	C.01	$\frac{F.15}{135}$
Rebar } near Walter } 5/16/24 Rose }		
$\frac{F.12}{160}$	F.19	$\frac{F.15}{152}$
$\frac{F.22}{148}$	F.09	$\frac{F.21}{146}$
$\frac{F.23}{143}$	F.06	$\frac{F.32}{150}$
wing wall at bridge		
$\frac{F.20}{167}$	F.09	$\frac{F.38}{163}$
$\frac{F.18}{151}$	F.20	F.29
$\frac{F.16}{154}$	F.13	$\frac{F.27}{141}$
$\frac{F.15}{153}$	F.14	$\frac{C.05}{185}$
$\frac{C.08}{130}$	F.01	$\frac{C.17}{188}$
$\frac{F.08}{172}$	F.04	$\frac{F.07}{161}$
$\frac{F.04}{172}$	F.02	$\frac{F.09}{102}$

114187
113612

114469

24

Sta	+R	H. I.	-P.	Elev.	Grade	LT	C.	RA
35			4.30	1140.40	1140.85	$\frac{F.03}{164}$	F.04	$\frac{F.04}{173}$
36			2.70	1142.00	1142.25	$\frac{F.04}{172}$	F.02	$\frac{F.06}{162}$
T.P	4.30	1146.17	2.82	1141.87				
37			3.30	1142.90	1143.41	$\frac{F.01}{176}$	F.05	$\frac{00}{177}$
38			4.00	1142.20	1142.96	$\frac{F.02}{175}$	F.08	$\frac{F.11}{161}$
B.M			4.25	1141.92				
39			5.80	1140.40	1141.15	$\frac{F.05}{172}$	F.07	$\frac{F.09}{164}$
40			7.70	1138.50	1139.24	$\frac{F.13}{157}$	F.07	$\frac{F.14}{152}$
T.P	3.03	1141.21	7.98	1138.19				
41			4.30	1136.90	1137.51	$\frac{F.13}{152}$	F.06	$\frac{F.14}{152}$
42			5.90	1135.30	1135.87	$\frac{F.12}{162}$	F.06	$\frac{F.14}{157}$
+1.50 B.M	2.62	1138.76	5.07	1134.90 1134.90	1135.27 1135.27			
43			4.40	1134.40	1135.05	$\frac{F.14}{157}$	F.06	$\frac{F.16}{154}$
44			5.20	1135.60	1135.05	$\frac{F.22}{145}$	F.14	$\frac{F.19}{149}$
45			4.20	1134.60	1134.97	$\frac{F.07}{167}$	F.04	$\frac{F.09}{162}$
46			4.30	1134.50	1134.72	$\frac{F.05}{172}$	F.02	$\frac{C.04}{184}$
47			5.20	1133.60	1134.30	$\frac{F.18}{157}$	F.07	$\frac{F.14}{157}$

L+38+90

W. PAR. LE 43+50

140 504 1145

113876

7.9

Sta	+P.	H. T.	-P.	Elev	Grade
48			5.30	1133.50	1133.71
T.P.	509	1137.79	6.06	1132.70	
B.M.			8.13	1129.66	
49			5.00	1132.80	1132.97
50			6.90	1130.90	1131.84
51			7.70	1130.10	1130.84
			7.90	1129.90	1130.84
52			7.60	1136.20	1131.24
53			4.50	1133.30	1133.04
54			3.90	1132.30	1134.54
T.P.	271	1137.44	3.06	1134.73	1133.04
55			4.30	1133.10	1133.04
56			7.49	1130.00	1130.97
57			9.10	1128.80	1128.36
T.P.	239	1130.44	9.39	1128.05	
58			6.10	1124.30	1125.15
T.P.	207	1124.40	8.11	1122.33	

Lt	C.	Pt.
F10 762	F02	F13 158
F10 762	F02	F18 151
F10 763	F09	F15 159
F10 762	F07	F21 146
F21 766	F09	F19 148
F10 763	F10	F22 145
C11 194	C03	F09 164
C17 203	F06	F11 161
C14 199	C01	F01 176
F25 140	F10	F19 149
F07 167	00	F14 157
C21 223	F08	F12 160

Maple Lt. Sta. 584

Sta	T.R.	H.I.	-R	Elev	Grade	Notes	LA	C	RI
59			4.30	1120.10	1121.41				F2.5
B.M. of T.R.	1.87	1123.60	6.00	1118.40	1119.88	State Sect 20	F32 151	F1.1	F2.5 136
60			5.50	1118.10	1119.50		F4.3 152	F1.6	F1.6 154
61			4.50	1119.10	1119.50		F3.1 154	F1.4	F3.1 142
T.P.	4.64	1124.26	3.98	1119.62			F4.4 175	F0.4	F4.1 169
B.M.			4.62	1119.64		Wingwall L160x			
62			6.40	1117.90	1118.91		F1.8 151	F1.0	F1.8 151
63				1120.10	1121.12		F1.6 154	F1.0	F2.4 142
T.P.	8.77	1132.63	0.40	1123.86					
64			7.90	1124.70	1125.85		F1.3 151	F1.1	F4.2 171
T.P.	8.75	1139.62	1.76	1130.87		Maple L166x			
B.M.			2.67	1136.95					
65			8.40	1131.20	1130.93		F0.6 169	C0.3	F1.3 158
66			3.90	1135.70	1134.92		C1.0 192	C0.8	F1.4 157
T.P.	3.71	1141.23	2.10	1137.52					
67			5.10	1136.10	1136.71		F1.6 154	F0.6	F2.1 146
68			4.90	1136.20	1137.41		F3.2 145	F1.1	F2.3 143
69			4.40	1136.80	1137.78		F2.1 146	F1.0	F2.2 145
70			4.50	1136.70	1137.48		F1.7 152	F0.8	F1.2 160

Sta	+R	114123 H/T	-R	Elev	Grade	Lt	C	Rt
71			4.90	1136.30	1136.85	$\frac{F12}{160}$	F0.5	$\frac{F0.4}{172}$
T.P.	3.70	1139.31	5.62	1135.61				
72			3.00	1136.30	1136.22	$\frac{F11}{161}$	C0.1	$\frac{C0.4}{183}$
73			4.10	1135.20	1135.63	$\frac{F10}{163}$	F0.4	$\frac{F0.5}{170}$
74			4.90	1134.40	1134.96	$\frac{F13}{158}$	F0.6	$\frac{F0.1}{176}$
75			5.60	1133.70	1134.33	$\frac{F13}{158}$	F0.6	$\frac{F0.4}{172}$
76			6.00	1133.30	1133.70	$\frac{F13}{158}$	F0.4	$\frac{F0.9}{164}$
T.P.	4.22	1136.69	6.84	1132.47				
77			3.70	1133.00	1132.93	$\frac{F15}{152}$	C0.1	$\frac{F10}{163}$
78			5.10	1131.60	1131.86	$\frac{F09}{164}$	F0.3	$\frac{F0.9}{164}$
B.M.			5.53	1131.16		Elm Pt 77+40		
79			6.90	1129.80	1130.65	$\frac{F13}{158}$	F0.8	$\frac{E12}{160}$
80			8.60	1128.10	1129.52	$\frac{F14}{142}$	F1.4	$\frac{F20}{143}$
T.P.	4.65	1131.70	9.64	1127.05				
81			4.20	1127.50	1128.84	$\frac{F25}{136}$	F1.3	$\frac{F20}{143}$
82			4.60	1127.10	1128.24	$\frac{F27}{140}$	F1.1	$\frac{F17}{152}$
83			4.90	1126.80	1127.75	$\frac{F19}{143}$	F0.9	$\frac{F13}{159}$

Sta	TR	HI	-R	Elev	Grade	Lt	C	Rt
84			4.40	1127.30	1127.89	$\frac{F15}{152}$	F0.6	$\frac{F09}{164}$
T.P.								
85			4.20	1127.50	1128.14	$\frac{F14}{157}$	F0.6	$\frac{F10}{163}$
T.P.	5.06	1131.80	4.96	1126.74				
86			3.90	1127.90	1128.39	$\frac{F14}{157}$	F0.5	$\frac{F06}{163}$
87			3.20	1128.60	1128.42	$\frac{F04}{172}$	C0.2	$\frac{C04}{182}$
88			5.20	1126.60	1126.64	$\frac{C12}{195}$	00	$\frac{C03}{182}$
89			8.30	1123.50	1124.45	$\frac{C02}{181}$	F0.9	$\frac{F12}{160}$
T.P.	7.33	1127.67	11.46	1120.34				
90			8.40	1119.30	1120.13	$\frac{F11}{161}$	F0.8	$\frac{F12}{160}$
B.M.			5.98	1122.59				
91			9.30	1118.40	1118.86	$\frac{F14}{152}$	F0.5	$\frac{F13}{158}$
92			8.20	1119.50	1120.53	$\frac{F18}{163}$	F1.0	$\frac{F0.3}{173}$
93			2.80	1124.90	1125.70	$\frac{F09}{164}$	F0.8	00
^{7.50} T.P.	9.37	1134.19	0.30 2.85	1127.20 1124.82	1127.95	$\frac{F11}{161}$	F0.7	$\frac{F16}{154}$
94			5.70	1128.60	1129.05	$\frac{F10}{163}$	F0.4	$\frac{F13}{148}$
95			4.80	1129.50	1130.05	$\frac{F10}{163}$	F0.5	$\frac{F18}{151}$
96			3.90	1130.40	1130.87	$\frac{F09}{164}$	F0.5	$\frac{F12}{160}$

N.V. Co. Par. RR Culvert - R.R. 901

Rebok
Walter } 5/3/22. clear
Rose }

Sta	T.R	H.I	T.R	Flck	Grade
97			4.00	1130.20	1130.75
T.R	4.35	1135.28	3.26	1130.93	
98			5.60	1129.70	1130.45
99			5.40	1129.90	1130.47
100			4.50	1130.80	1131.15
101			3.70	1131.60	1132.53
T.R	9.03	1140.38	3.93	1131.35	
102			7.00	1133.40	1134.65
B.M			5.05	1135.83	
103			4.20	1136.20	1137.15
104			1.40	1139.00	1139.40
T.P	3.09	1141.93	1.54	1138.84	1139.27
105			4.00	1137.90	1138.15
106			6.20	1135.70	1136.65
T.P	2.86	1140.52	4.27	1137.66	
107			5.80	1134.90	1135.74
108			5.10	1135.40	1136.03

on stake Pt 97

Every year Pt 102 + 40

Lt	C	Rt
F10 163	F05	00 177
F07 167	F07	005 185
F11 161	F06	F02 175
F08 167	F03	F05 179
F11 161	F09	0.1 173
F11 163	F12	0.2 182
F11 161	F09	F06 169
F08 166	F04	F05 179
F10 163	F05	0.3 187
F07 167	F02	0.0 173
F21 166	F09	F11 161
F14 157	F10	F09 164
F10 163	F06	F07 167

Sta	+R	H.I.	-R	Elev	Grade
109			4.60	1135.90	1136.91
110			3.70	1136.80	1137.79
T.P.	6.04	1142.51	4.05	1136.47	
111			4.70	1137.80	1138.67
112			3.80	1138.70	1139.55
+25			3.40	1139.10	1139.63
113			4.20	1138.30	1138.80
114			5.70	1136.80	1137.62
B.M.	4.47	1142.22	4.76	1137.75	
115			5.70	1136.50	1137.20
116			5.90	1136.30	1136.90
T.P.	5.53	1141.75	6.00	1136.22	
117			6.00	1135.70	1136.60
118			6.10	1135.60	1136.44
119			5.10	1136.60	1137.10
+50			4.70	1137.00	1137.37
120			5.20	1136.50	1136.90

Sta	+R	H.I.	-R	Elev	Grade
109				F10 163	F10 F04 172
110				F10 158	F10 06 172
T.P.	6.04	1142.51	4.05		
111				F13 152	F09 F01 176
112				F13 152	F08 C.06 186
+25				F13 162	F05 C03 183
113				F13 158	F05 C06 186
114				F13 158	F08 F07 167
B.M.	4.47	1142.22	4.76	1141.20	Maple Pt. 1141.20
115				F13 151	F07 F13 158
116				F11 161	F06 C05 185
T.P.	5.53	1141.75	6.00		
117				F13 159	F09 F06 169
118				F11 161	F08 F05 170
119				F08 162	F05 C06 186
+50				F13 166	F04 F04 172
120				F07 167	F04 F04 172

Sta	TR	HT	-R	Elev	Grade
121			7.10	1134.60	1135.70
122			7.90	1133.80	1134.90
B.M.	2.71	1139.31	5.15	1136.60	
123			5.00	1134.30	1134.94
124			5.20	1134.10	1135.38
125			4.90	1134.40	1135.82
126			4.30	1135.00	1136.26
127			2.90	1136.40	1136.70
B.M.	4.60	1141.62	2.29	1137.02	
128			4.90	1136.70	1137.14
129			4.80	1136.80	1137.37
130			4.80	1136.80	1137.18
131			5.80	1135.80	1136.91
132			4.90	1136.70	1137.58
T.P.	9.09	1145.72	4.99	1136.63	

Sta	TR	HT	-R	Elev	Grade	Notes
121			7.10	1134.60	1135.70	F.11 162
122			7.90	1133.80	1134.90	F.11 167
B.M.	2.71	1139.31	5.15	1136.60		N. 12. cor. 11 1912. Reborn Walter 1912
123			5.00	1134.30	1134.94	F.11 157
124			5.20	1134.10	1135.38	F.11 151
125			4.90	1134.40	1135.82	F.11 145
126			4.30	1135.00	1136.26	F.11 151
127			2.90	1136.40	1136.70	F.11 174
B.M.	4.60	1141.62	2.29	1137.02		
128			4.90	1136.70	1137.14	F.11 164
129			4.80	1136.80	1137.37	F.11 162
130			4.80	1136.80	1137.18	F.11 162
131			5.80	1135.80	1136.91	F.11 148
132			4.90	1136.70	1137.58	F.11 157
T.P.	9.09	1145.72	4.99	1136.63		

Sta.	+R.	H.I.	-R.	Elev.	Grade
133			7.00	1138.70	1139.31
134			4.40	1141.30	1141.89
+50			3.50	1142.20	1142.57
135			4.20	1141.50	1142.60
136			4.70	1141.00	1142.50
T.P.	564	1145.93	5.93	1140.29	
137			5.00	1140.90	1142.40
138			4.00	1141.90	1142.30
139			4.90	1141.00	1142.03
140			5.10	1140.80	1141.41
141			5.40	1140.50	1140.62
142			7.70	1138.20	1139.82
+50			7.60	1138.30	1139.62
+93!			6.20	1139.70	1140.50
B.M.			6.50	1139.43	

Lt	C	Rt
$\frac{F0.3}{172}$	F0.6	$\frac{C.14}{193}$
$\frac{F0.5}{170}$	F0.6	$\frac{C.02}{181}$
$\frac{F0.5}{172}$	F0.4	$\frac{C0.4}{183}$
$\frac{F1.3}{152}$	F1.1	$\frac{F1.3}{152}$
$\frac{F2.4}{142}$	F1.5	$\frac{F1.8}{151}$
$\frac{F1.1}{161}$	F1.5	$\frac{F1.4}{157}$
$\frac{F0.3}{173}$	F0.4	$\frac{F1.7}{152}$
$\frac{F2.0}{142}$	F1.0	$\frac{F0.4}{172}$
$\frac{F1.6}{154}$	F0.6	$\frac{0.0}{172}$
$\frac{F1.4}{157}$	F0.1	$\frac{C0.4}{183}$
$\frac{F3.5}{156}$	F1.6	$\frac{F1.4}{157}$
$\frac{F4.7}{181}$	F1.3	$\frac{F1.5}{152}$
$\frac{F1.5}{152}$	F0.8	$\frac{F1.9}{142}$

Rebok
Walter
Rose } 6/11/22

Stn	T.R.	M.T.	T.P.	Elev	Grade
BM	11.06	1136.38		1125.32	
29			1070	1125.69	1125.91
28			876	1128.17	1128.76
27			320	1133.18	1134.10
T.P.	11.83	1144.69	352	1132.96	
26			546	1139.23	1139.80
25			010	1144.59	1144.89

F02 ✓
F06 ✓
F09 ✓
F06 ✓
F03 ✓

Rebok
Walter 6/3/22
Rose

120110
1045
119012

Sta	TR	HT	R	Elev	Grade	Sub G.	Top of stone	Bot. of Ditch	
								Lt	Rt
BM	398	1230.48		1226.50					
0			7.10	1223.38	1223.76	1222.85 1223.10			
1			5.00	1225.50	1226.48	1225.63 1225.89	F03	6.50 1224.00	5.30 1225.20
2			4.75	1226.73	1226.80	1225.89 1226.14	F04	6.10 1224.40	5.60 1224.90
3			5.20	1225.28	1226.08	1225.17 1225.42	F01	7.10 1223.40	6.40 1224.10
T.P	2.00	1227.36	5.12	1225.36		1223.39		4.90	4.60
4			3.50	1225.86	1224.30	1223.64	C02	1222.50	1222.80
5			6.00	1221.36	1221.85	1220.94 1221.19	C02	7.90 1219.50	6.80 1220.60
6			9.30	1218.06	1218.42	1217.51 1217.76	C03	11.00 1216.40	10.10 1217.30
T.P	0.26	1217.93	9.69	1217.67		1213.41		5.40	4.80
7			4.20	1213.70	1214.32	1213.66	00	1212.50	1213.10
8			9.40	1208.50	1209.62	1208.71 1208.96	F04	10.50 1207.40	10.60 1207.30
T.P	0.97	1210.34	8.56	1209.37		1203.43		7.80	7.70
9			6.70	1203.60	1204.40	1203.74	F01	1203.50	1202.60
T.P	1.00	1201.10	10.24	1200.10		1198.19		3.70	3.00
10			2.70	1198.40	1199.10	1198.44	00	1197.40	1198.10
11			7.76	1193.34	1193.80	1192.83 1193.14	C02	9.00 1192.10	9.20 1191.90
T.P	1.32	1191.44	10.98	1190.12		1187.59		5.60	5.40
12			4.20	1187.80	1188.50	1187.84	F06	1185.80	1186.00

Sta.	TR	H.T.	-R.	Elev.	Grade	Sub G.		Bak. of O.K.H.	
								L.	R.
13			9.50	1181.94	1183.20	1182.29 ^s 1182.54 ^c	F.0.8	10.20 1181.20	10.30 1181.10
T.P.	0.98	1183.92	8.50	1182.94		1176.99 1172.4 ^s	F.0.5	7.80 1176.10	7.70 1176.20
14			9.20	1176.76	1177.90	1172.11 ^s 1172.36 ^c		3.60 1171.50	3.60 1171.50
T.P.	1.72	1175.12	10.52	1173.40		1168.29 ^s 1168.54 ^c	F.0.5	8.20 1166.90	8.60 1166.50
15			2.90	1172.20	1173.02	1164.89 ^s 1163.14 ^c	F.0.4	3.20 1163.00	2.60 1163.60
16			7.10	1168.00	1169.20	1161.62 ^s 1161.87 ^c	C.0.3	5.40 1160.80	4.70 1161.50
T.P.	2.39	1166.16	11.35	1163.77		1160.19 ^s 1160.44 ^c	F.0.1	7.80 1158.40	7.80 1158.40
17			1.40	1164.76	1165.80	1158.81 ^s 1159.06 ^c	C.0.1	4.90 1157.70	4.70 1157.90
18			4.00	1162.16	1162.53	1156.86 ^s 1157.11 ^c	C.0.1	6.20 1156.40	6.70 1155.90
19			5.85	1160.31	1161.10	1154.26 1154.31	F.0.2	9.50 1153.10	10.70 1151.30
T.P.	3.26	1162.57	6.85	1159.31		At Sta 21+25			
20			3.40	1159.17	1159.72	1157.34	F.0.3	9.20 1150.50	11.20 1148.50
21			5.40	1157.17	1157.77	1148.09	F.0.3	4.20 1146.50	3.80 1146.90
22			8.30	1154.27	1155.17				
B.M.	0.49	1159.73		1159.24					
23			8.70	1151.00	1152.00				
T.P.	0.12	1150.73	9.12	1150.61					
24			2.90	1147.80	1148.75				
25			6.50	1144.20	1144.89	1144.23	C.0.	7.60 1143.40	7.60 1143.10

Reborn's 1161.92
Hannity

115973

Clear
Rebox } 6/15/11
Kinkley

Sta	+R	H.I.	-R	Elev	Grade	Sub Grade		Bot of Ditch	
								Lt.	Rt.
26			1.40	1139.30	1139.80	1139.14	0.22	1139.30	1137.30
T.P.	135	1140.76	1.32	1139.41					
27			7.60	1133.16	1134.10	1133.44	0.22	1132.80	1132.60
T.P.	0.10	1132.10	8.76	1132.00					
28			3.90	1128.20	1128.76	1128.10	0.0	1126.70	1126.80
750			5.20	1126.90	1126.97	1126.31	0.22		
29			6.30	1125.80	1125.91	1125.25	0.23		
30			6.90	1125.20	1125.55	1124.89	0.23	7.10	
31			6.00	1126.10	1126.90	1126.24	0.0	7.10	8.00
T.P.	9.85	1136.51	5.44	1126.66				1125.80	1124.80
32			6.00	1130.50	1131.55	1130.89	0.24	7.50	7.00
32								1129.00	1129.50
33			0.50	1136.00	1136.35	1135.69	0.23	1.90	2.10
T.P.	296	1145.51	0.96	1135.55				1134.60	1134.40
33+50			7.90	1137.60	1138.33	1137.67	0.22	9.20	9.20
								1136.30	1136.30
34			6.90	1138.60	1139.45	1138.79	0.20	8.20	8.20
								1137.30	1137.30
35			5.20	1140.30	1140.85	1140.19	0.20	6.30	6.00
								1139.20	1139.50
36			3.70	1141.80	1142.25	1141.59	0.22	4.70	4.70
								1140.80	1140.80

Sta	TR	H.I	-R	Elev	Grade	Sub Grade		Bot of ditch		
37			2.70	1142.80	1143.41	1142.75		5.80 1141.70	3.70 1141.80	
BM	3.34	1145.23	3.62	1141.89	1141.89	Maple Lt	Sta. 39			
38			3.20	1142.00	1142.96	1142.50	Flag	Rebok Pinekey } 7/3/22	3.80 1141.40	4.50 1140.70
39			5.00	1140.20	1141.15	1140.49	Flag		5.70 1139.50	5.90 1139.30
40			6.90	1138.30	1139.24	1138.58	0.0		8.40 1136.80	8.40 1136.80
41			8.50	1136.70	1137.51	1136.85	9.9		9.70 1135.50	10.00 1135.20
42			10.10	1135.10	1135.87	1135.21	0.0		11.30 1133.90	11.90 1133.40
TR	3.41	1138.93	9.71	1135.52						
43			4.70	1134.20	1135.05	1134.39	1.00		5.80 1133.10	6.00 1132.90
+50			4.30	1134.60						
44			5.10	1133.80	1135.05	1134.59	Flag		6.40 1132.50	6.40 1132.50
45			4.60	1134.30	1134.97	1134.31	0.0		6.10 1132.80	5.60 1133.30
46			4.70	1134.80	1134.72	1134.06	0.0		6.00 1132.90	5.80 1133.10
47			5.50	1133.40	1134.30	1133.64	0.0		7.30 1131.60	7.20 1131.70
48			5.70	1133.20	1133.71	1133.05	0.0		7.20 1131.70	7.10 1131.80
49			6.40	1132.50	1132.97	1132.31	0.0		7.90 1131.00	8.30 1130.60

113893

Stn	+R	HT	-R	Elev	Grade	Sub. Grade		Back of Dist.	
50			7.90	1131.00	1131.84	1131.18	00	1129.60	1129.30
51			9.00	1129.90	1130.84	1130.18	5.3	1090 1128.10	1090 1128.00
B.M.	6.64	1136.30		1129.66		Maple Lt. Sta. 50+	clear		
52			5.70	1130.60	1131.24	1130.58	100	7.20	8.00
53			3.90	1132.40	1132.04	1132.38	80. Stakes set to Sub. 5.	4.80	5.20
T.P.	4.40	1136.80	3.90	1132.40					
54			3.60	1133.20	1134.54	1133.88	Foot " " " "	4.70	4.40
55			4.20	1132.60	1133.64	1133.38	50.8		5.30
56			6.90	1129.90	1130.37	1130.31	5.2	8.70	8.50
57			8.90	1127.90	1128.56	1127.70	5.2	10.80	10.20
T.P.	0.75	1129.11	8.44	1128.36					
58			4.60	1124.50	1125.15	1124.43	00	6.10	6.10
59			8.60	1120.50	1121.41	1120.95		11.00	10.50
60			10.10	1119.00	1119.50	1118.84	50.8		
B.M.	4.07	1123.71		1119.64					
61			4.40	1119.30	1119.50	1118.84	0.05		
62			5.30	1118.40	1118.91	1118.25	100	7.10	6.70

1123.71

Sta	+R	H.I.	-R	Elev	Grade	Sub.G			Ext. of Ditch
									4.70 5.00
63			3.20	1120.50	1121.12	1120.96			
TP	11.67	1132.79	2.59	1121.12					
64			7.90	1124.89	1125.85	1125.19	1126.31		
65			2.70	1130.10	1130.98	1130.27	1130.99		3.90 3.20
B.M.	2.80	1139.75		1136.95		11. Sta 66 + 15	Maple road	Rebok Fred } 7/17/22	6.50 6.00
66			5.50	1134.25	1134.92	1134.86	1134.99		
67			3.70	1136.05	1136.71	1136.65	1136.80		5.20 5.10
68			3.50	1136.25	1137.41	1136.75	1137.25		5.20 5.00
B.M.	4.27	1141.22		1136.95				Rebok Rocky } 7/18/22	
69			4.20	1137.00	1137.78	1137.12	1137.82	X	6.20 6.20
70			4.40	1136.80	1137.48	1136.82	1137.50	X	5.70 6.10
71			4.90	1136.50	1136.85	1136.19	1136.80		6.20 6.10
72			4.80	1136.40	1136.22	1136.66	1136.80		6.40 5.40
73			6.00	1135.20	1135.53	1134.92	1135.10		7.00 7.30
74			6.70	1134.50	1134.96	1134.30	1134.90		7.60 7.60
B.M.	4.90	1136.06		1131.16		Elm R179+40			
82			8.60	1127.46	1128.24	1127.88	1128.00	Rebok Rocky } 7/24/22	11.20 10.50
			8.10	1127.96		Culvert.			

Sta	TR	113606 H.T.	-R	Flc	Grnd	Sub G.		Pct. of Dist.	
81			8.30	1127.76	1128.84	1128.12	Fo.A	10.70	9.50
80			7.60	1128.66	1129.52	1128.86	Fo.A	9.70	9.60
79			6.40	1129.66	1130.65	1129.99	Fo.A	8.20	8.10
78			4.80	1131.26	1131.86	1131.20	0.0	6.30	6.30
77			3.70	1132.86	1132.83	1132.87	0.0	5.20	5.10
76			3.10	1132.96	1133.70	1133.04	0.0	4.60	4.50
T.P	5.91	1139.64	2.33	1133.78				7.10	7.20
75			6.10	1133.50	1134.39	1133.66	0.0		
74			5.40	1134.20	1134.96	1134.30	0.0	6.30	6.60
73			4.60	1135.00	1135.59	1134.96	0.0	5.60	5.80
72					1136.22	1135.56			
B.M.	9.33	1131.92		1132.59			Top of Headwall. EXCAVATED	4.50	4.50
95			2.40	1129.50	1130.05	1129.89	0.0		
94			3.50	1128.40	1129.05	1128.39	0.0	5.20	5.30
93			6.90	1125.00	1125.70	1125.04	0.0	8.70	8.50

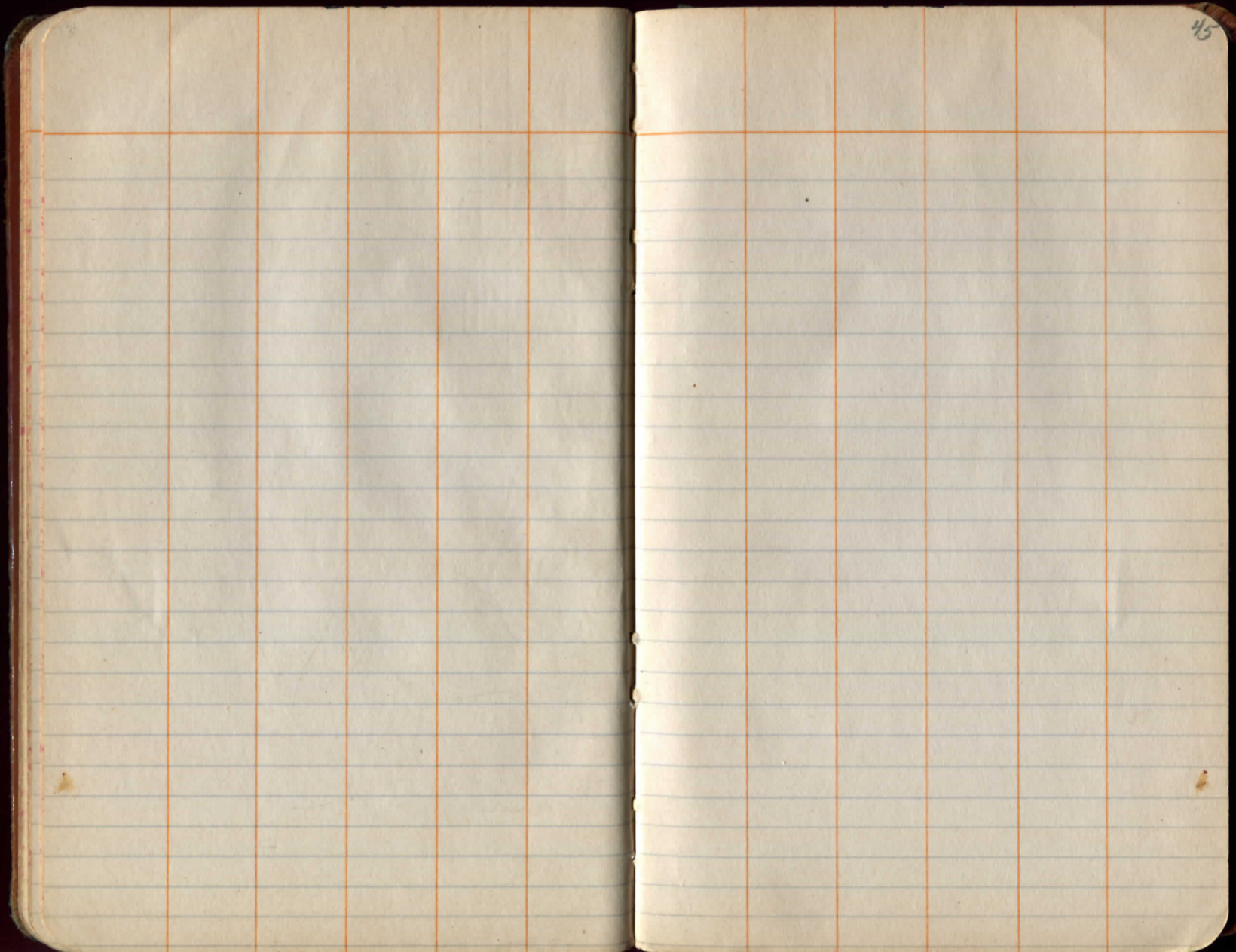
Rebok
Fred } 7/26/22 Clear

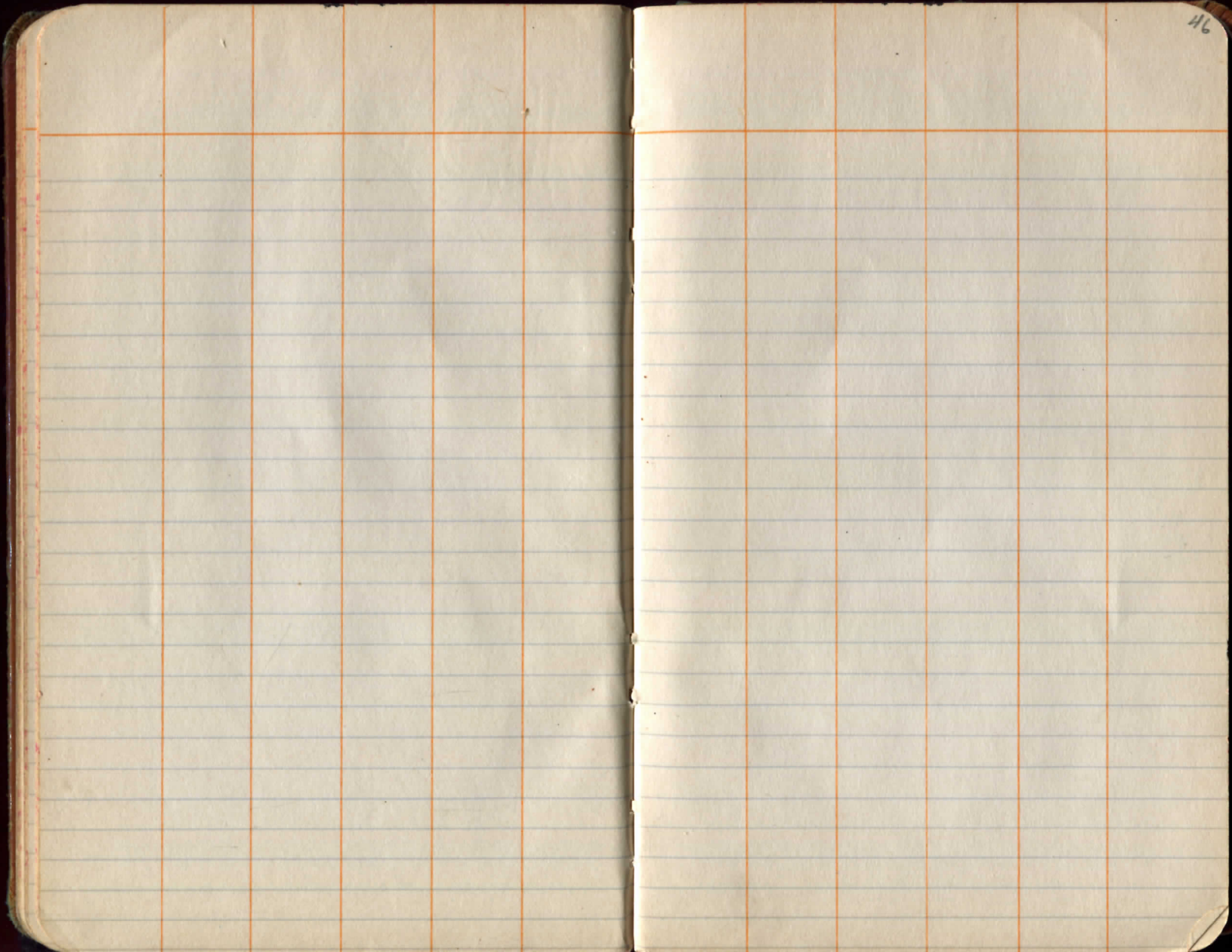
113192

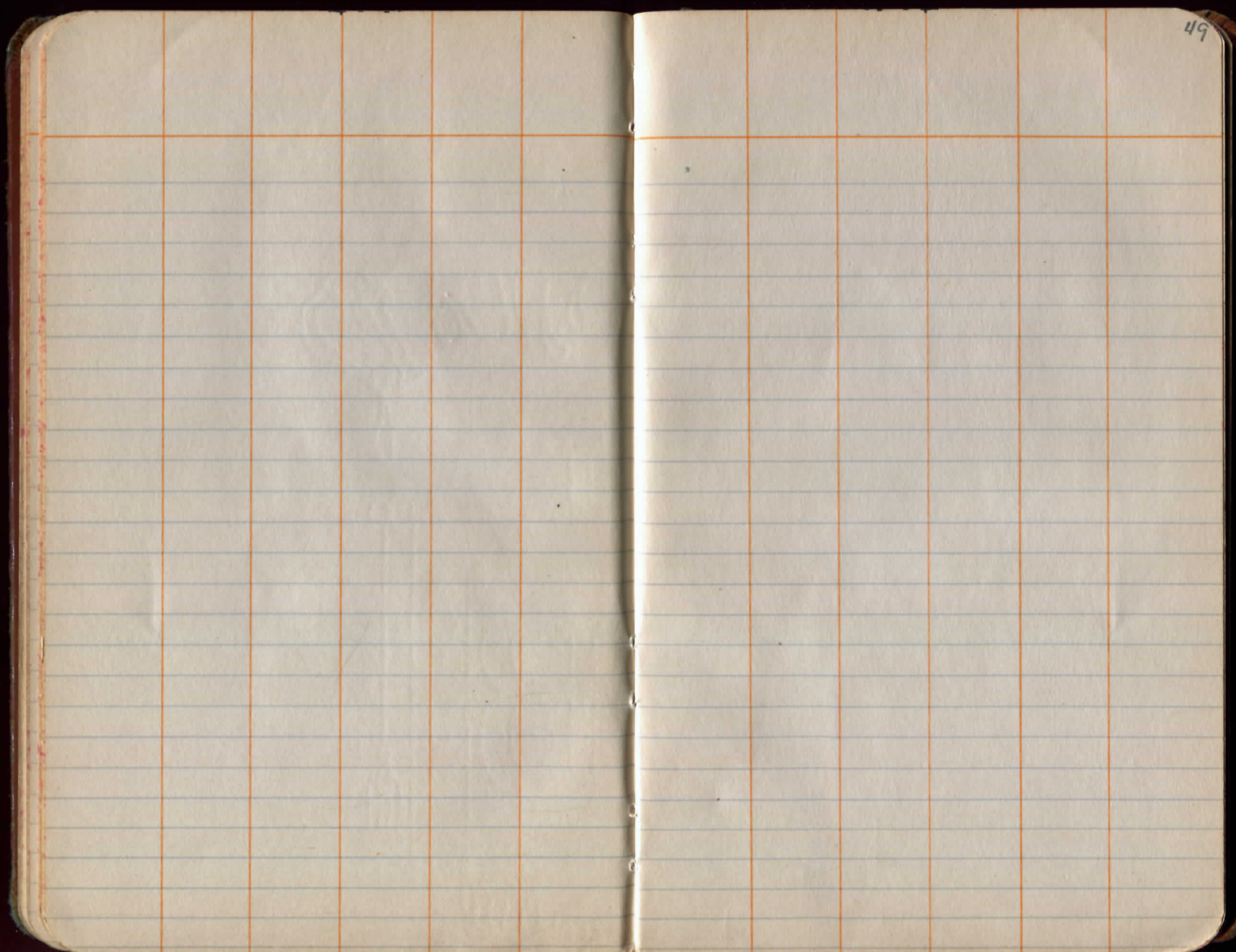
Sta	+R	H.T.	-R	Elev	Grade	sub. G.		Rate of. Ditch	
92			11.90	1120.00	1120.53	1119.87	00	13.70	13.00
BM.	6.63	1129.22	-	1122.59				12.10	12.50
91			10.50	1128.70	1128.26	1118.20	00.5		
			10.10	1119.10		Bridge Floor		11.10	10.10
90			9.60	1119.60	1120.13	1119.47	00		
89			5.30	1123.90	1124.45	1123.79	00	7.10	7.30
88			2.90	1126.80	1126.64	1125.98	00.3	4.30	4.20
87			1.10	1128.10	1128.42	1127.76	00.3	2.80	2.10
T.P.	4.07	1133.02	0.27	1128.95	1			7.20	6.10
86			4.80	1128.20	1128.29	1127.73	00.5		
85			5.20	1127.80	1128.14	1127.48	00.3	7.30	6.60
84			5.70	1127.30	1127.29	1127.23	00	7.60	6.60
83			5.80	1127.20	1127.75	1127.09	00	8.00	7.20
BM	5.73	1141.06		1135.33		L+103+40		3.90	3.50
104			2.60	1138.50	1139.40	1138.74	00		
103			4.70	1136.36	1137.15	1136.49	00	6.00	5.70
102			7.30	1133.76	1134.65	1133.99	00	9.00	8.50

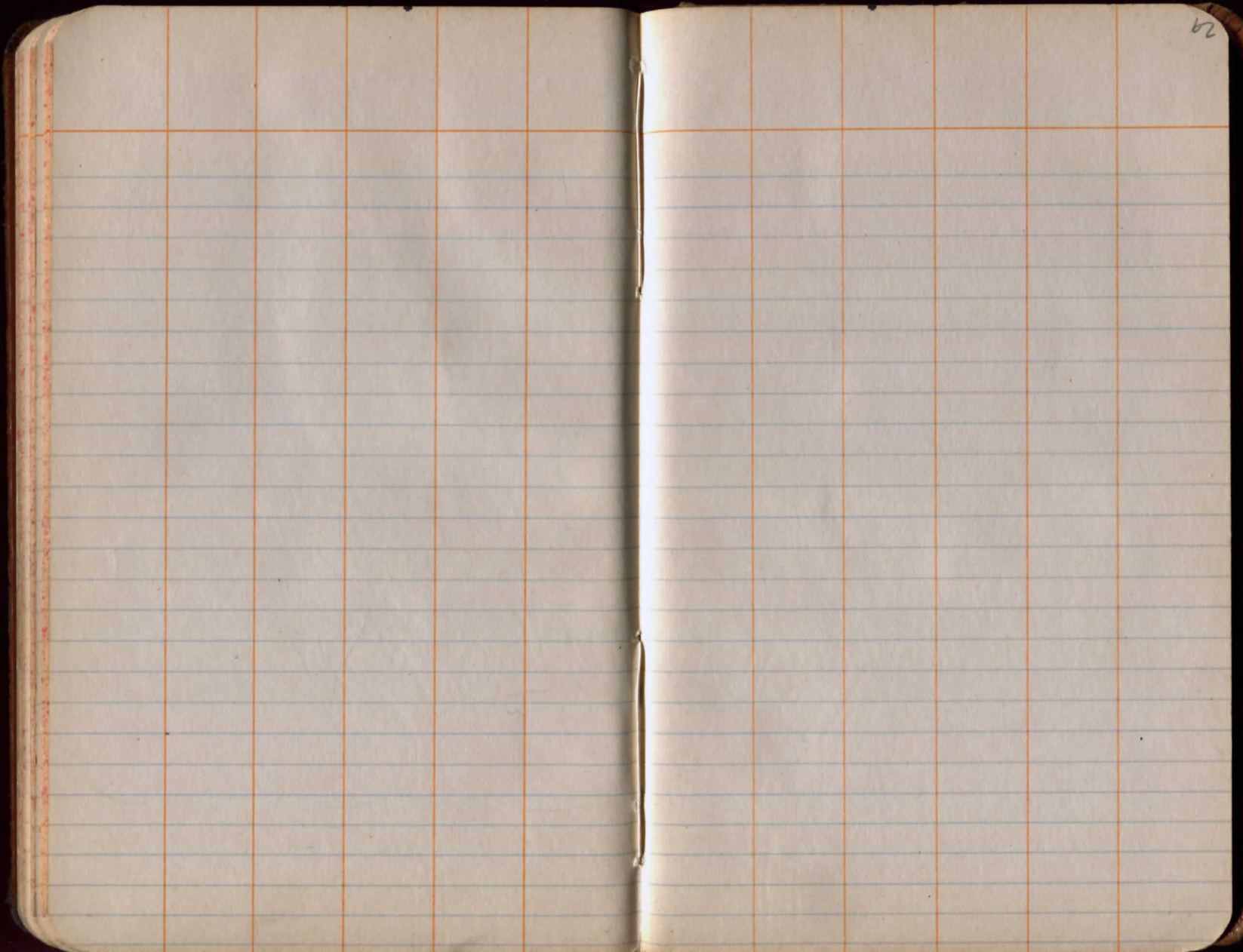
Rebok
Sliter } 8/3/22

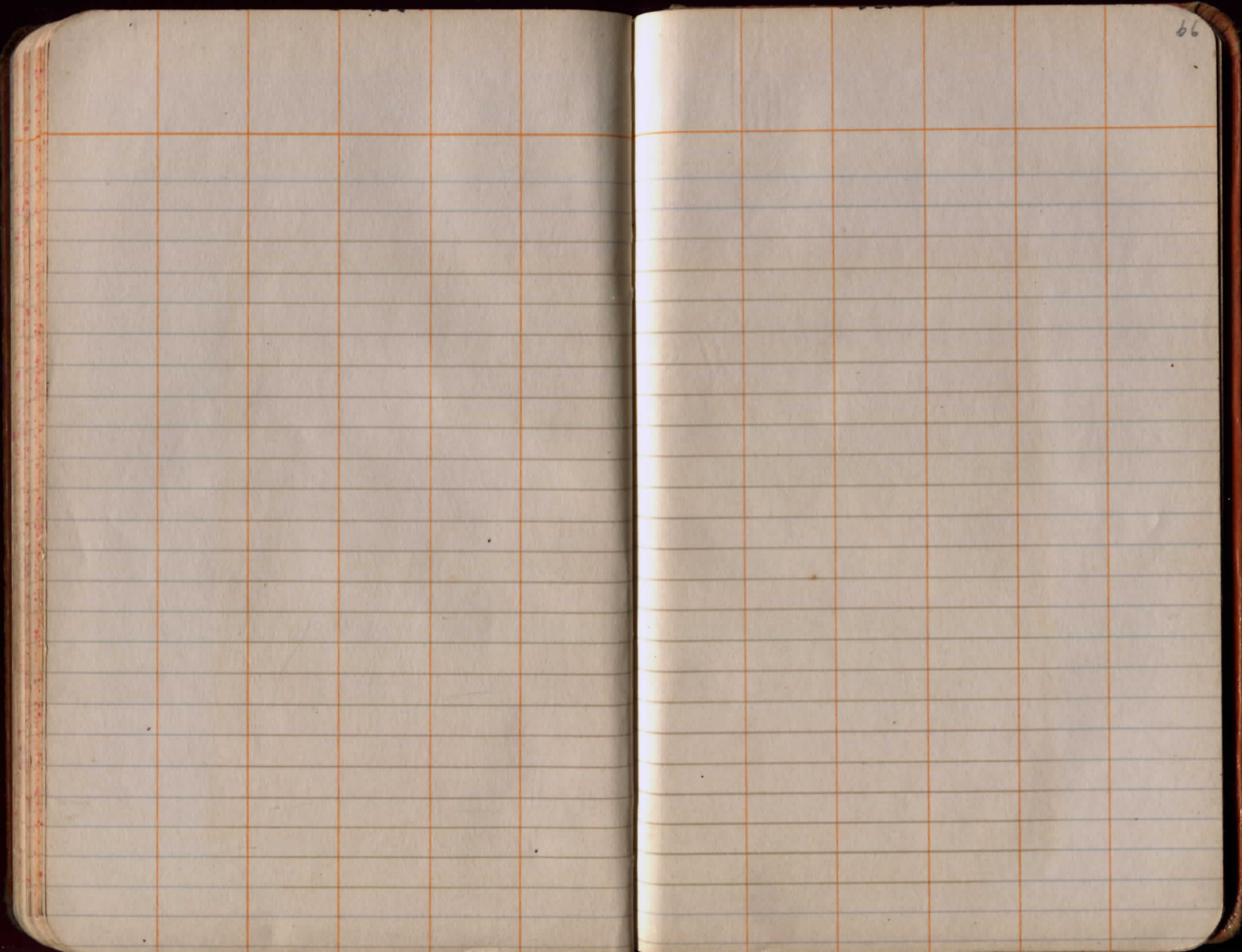
Sta	TR	HT. 1141.06	R	Elev	Grade	Sub G.		Bot of Ditch +
TR	115	1135.78	6.43	1134.63				
101.			4.15	1131.63	1132.53	1131.87	00	5.70 4.80
100			5.10	1130.68	1131.15	1130.49	00	6.90 6.60
99			6.00	1129.78	1130.47	1129.81	00	7.50 7.20
98			6.10	1129.68	1130.45	1129.79	00	7.10 6.90
97			5.80	1129.98	1130.75	1130.09	00	7.10 7.30
96			5.40	1130.38	1130.87	1130.21	00	7.00 7.60

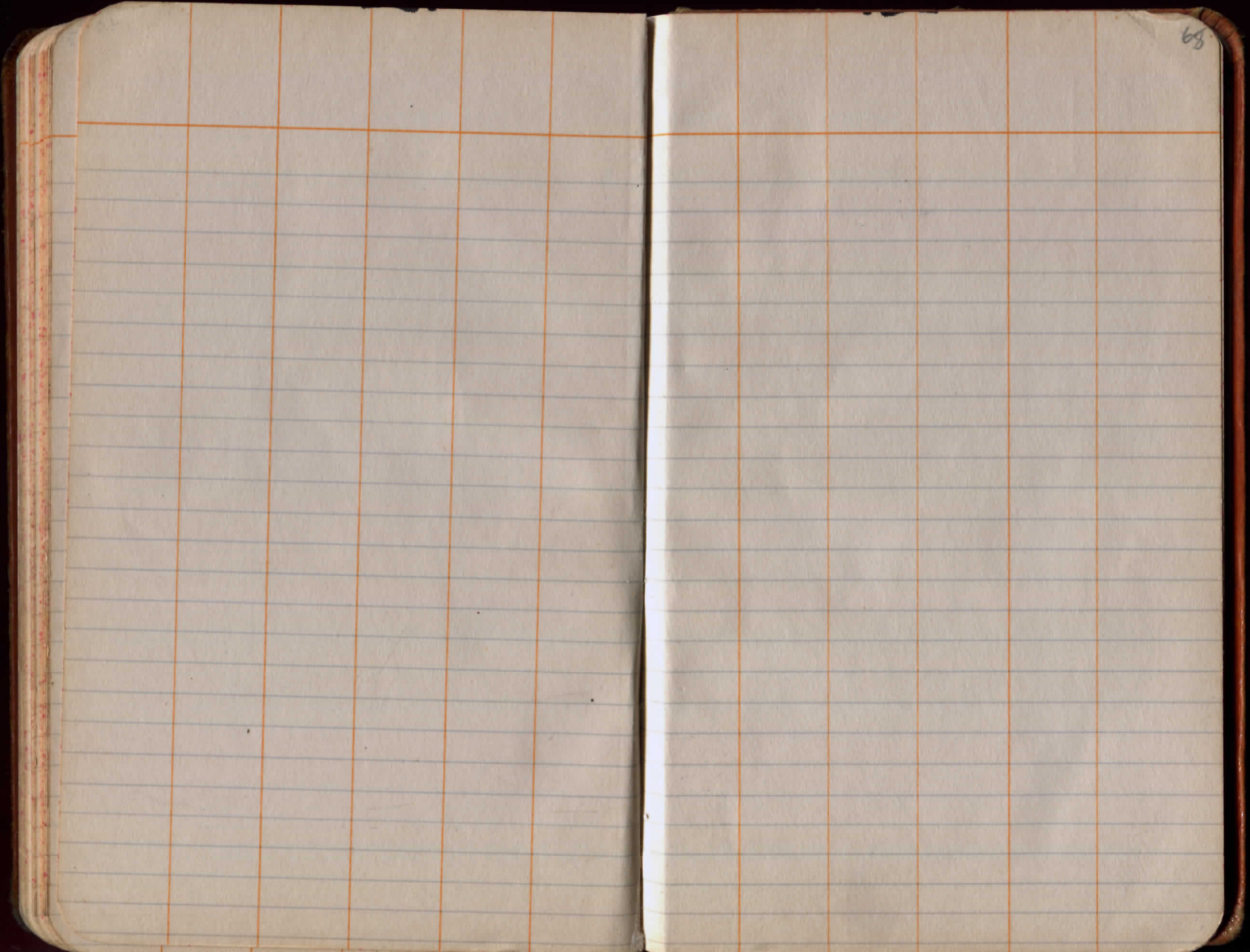












PRR 162827-101200
 " 154202 98200
 ARR 744272 157800
 " 409030 116900
 " 718789 126000
 ERIC 28580 95200
 NYC 420944 102700
 PRR 174710 131400

Total 16500
 17500
 469 TONS

Second Course 8/26/22

PRR 218723-112100 }
 BTO 124087-106386 } 8/30/22 Est. 208 TONS
 NYC 413293-101300 }
 " 411620-97000 }

" 402507-107700
 PRR 732994-123900
 ERIC 25971-105000
 PRR 704690-95800
 " 151881-97300
 " 175028-148100
 " 741208-145600
 " 725787-103300
 NYC 406841-104700
 " 411327-105000
 PRR 714756-95200
 " 702357-100900
 " 726399-99200
 ERIC 26739-102200
 " 27394-105400 ✓
 " 25971-105000 ✓
 PRR 703393-92500 ✓
 " 701293-100300 ✓

9/12/22
 915 TONS

No. 4: 26528-100800 }
 23386-116200 ✓ } 8/30/22 Est.
 28971-99600 ✓ } 217 TONS
 25215-118500 ✓ }
 104800 } 9/12/22 = 128 TONS
 102400 }

No. 6

42424-97400 ✓ }
 10842-108000 ✓ } 8/30/22 Est.
 25644-102700 ✓ } 154 TONS
 107600 }
 103000 } 9/12/22 = 191 TONS
 106600 }

Sta. 90+45 = Con. 1-3-6 = 16 cu yds
 Total con 1-3-6 = 26 cu yds " 1-2-4 = 136 " "
 " " 1-2-4 = 556 " Masonry relaid. 6.0 " "
 " EXC. 64.0 cu yds. Steel = 64.5 #
 " Steel 3548 # EXC. = 15.0 cu yds.

Waterbound 5" base at total 142+03 =
 8/30/22 No. 2 slag 261 Tons

9/12/22 #2 slag Sta. 101+25 915 Tons
 1st coat Tar 17+75. 97 Tons

Estimate.

7/12/22	EXC. Total to date	3500 cu yds
"	slag delivery	1200 Tons
"	5" Base	4525 sq. yds.
"	12" corr.	144 lin. ft.
7/31/22	con Sta 29+60-102-4-	26.2 cu yds.
"	" " " " " " " " " " " "	1.0 " "
"	steel " " " " " " " " " "	2608 #
"	EXC. " " " " " " " " " "	5.0 cu yds.
"	#1 slag on road. Total.	2315.3 Tons.
"	#7 screenings on road "	568.1 "
"	water bound Mac.	7100. FT.
8/15/22	Sta. 81+50	1.5 cu yds
"	100ft steel. #1	50#
"	100ft quantity.	" "
8/15/22	Screenings Total	832.9 Tons
"	Base. Total	3442.8 "
"	Waterbound from Sta 71 to Sta 90	" "
"	" " " 91 to " "	96
"	" " " 100 to " "	105 Total 10000ft.
Sta. 77+25	con.	1.3 cu yds.
"	EXC.	8 " "
"	slag	30#
Sta. 106+75	con.	1.3 cu yds.
"	EXC.	6 " "
"	Steel	30#
Sta. 117+45	con.	1.3 cu yds.
"	EXC.	6.0 " "
"	Steel	30#
Sta. 121+82	con.	1.3 cu yds.
"	EXC.	8.0 " "
"	Steel	30#
Sta. 131+25	con.	1.3 cu yds.
"	EXC.	8.0 " "
"	Steel	30#
Sta. 142+5R	con.	4.8 cu yds.
"	EXC.	50 " "
"		1-2-6. 10 yds. Total EXC. 46 cu yds. Total con. 124.39 cu yds. Total steel 2800#
8/30/22	Sta. 81+50. Painting	110. lin. ft.
"	Sta. 124+65 con.	15 cu yds.
"	" steel	50#
"	Sta. 29+60 Painting	176 lin ft.
"	" " "	200 " "
"	" 0+15 con.	1.5 cu yds.
"	" steel	45#
"	" EXC.	3.0 cu yds.

Base Slag - Tray Road
4/20/22-III

Anay 1523.44
8/5/22

	car. No.	weight			
6/6/22	BTO x 124976	127600	#1	✓	✓
"	BTO x 320441	123700	#1	✓	✓
4/7/22	BTO x 321350	117600	#1	✓	✓
"	MK x 4372	127600	#1	✓	✓
6/8/22	X 405240	90600	#1	✓	✓
6/9/22	MK x 4567	107300	#1	✓	✓
"	MK x 4672	102900	#1	✓	✓
6/10/22	BTO x 323333	96200	#1	✓	✓
6/14/22	BTO x 224572	94000	#1-2	✓	✓
"	X 430260	96400	#1	✓	✓
"	RRR x 276677	133440	#1	✓	✓
"	BTO x 224572	105300	#1	✓	✓
June 20/22	" x 320122	116800	#1	✓	✓
"	BTO x 320385	111300	#1	✓	✓
7/1/22	BTO x 275437	106000	#1	✓	✓
"	" x 322139	110900	#1	✓	✓
7/4/22	BTO x 223750	109400	#1-2	✓	✓
"	" x 322257	121500	#1-2	✓	✓
7/5/22	BTO x 321134	101300	#1	✓	✓
7/5/22	BTO x 320821	102900	#1	✓	✓
7/6/22	BTO x 520877	113600	#1	✓	✓
7/6/22	BTO x 223433	103900	#1	✓	✓
7/6/22	MK x 4855	117900	#1	✓	✓
7/7/22	BTO x 320072	112000	#1	✓	✓
6/30/22	Env. x 37426	108300	#1	✓	✓
7/11/22	" x 27508	108500	#1	✓	✓
"	" x 30680	103400	#1	✓	✓
"	" x 28623	100000	#1	✓	✓

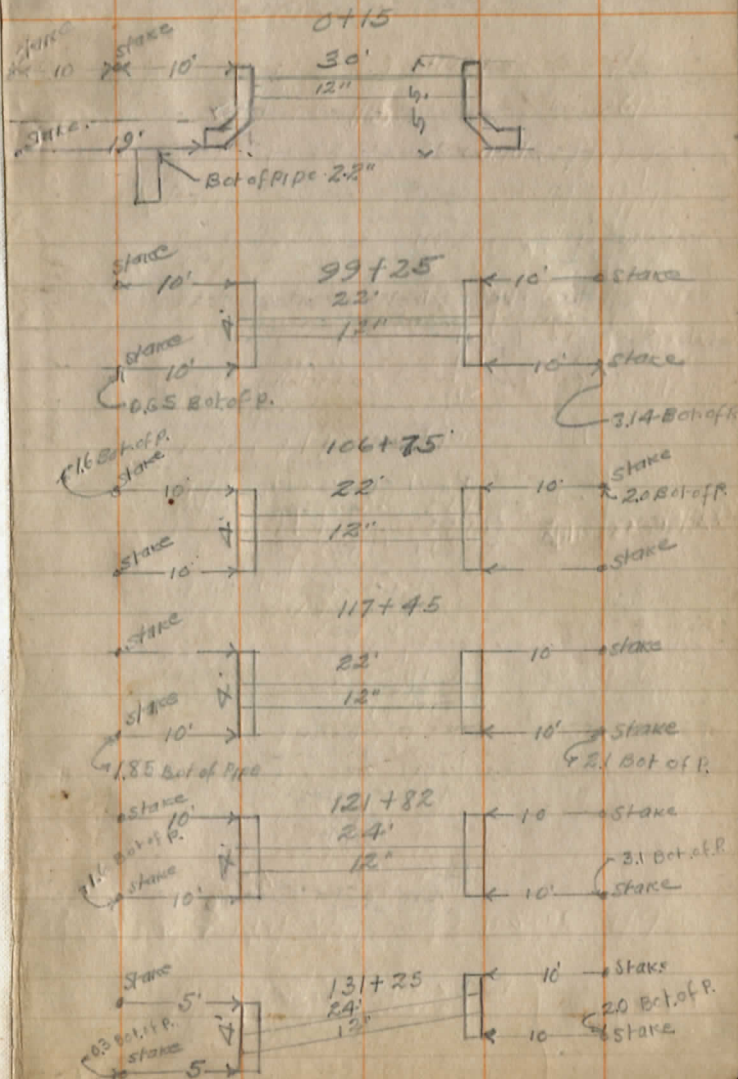
1472.9 T

Filler

5/10/22	MK x 65451	112800	#7	✓	✓
6/7/22	BTO x 323080	97100	#7	✓	✓
6/14/22	BTO x 325844	113600	#7	✓	✓
"	BTO x 224335	113200	#7	✓	✓
"	BTO x 325632	105400	#7	✓	✓
7/10/22	DRK x 4265066	138500	#7	✓	✓

Anay 340.3
8/5/22

For June Est turned in 7/11/22



225X 0.3 X 14. f

$$\begin{array}{r} 26+35 \\ 2 \quad 25 \\ \hline 28+60 \end{array}$$
 9/1/22

332-2
33.

113583

$$\begin{array}{r} 631 \\ 1141.68 \text{ HI} \\ \hline 647 \\ 1135.21 \\ \hline 332 \\ \hline 2.0 \end{array}$$

290 - 100
1188.80
410
137.60 - 100

1137.90

67
1137.23

104.15
103-39.80

113770

$$\begin{array}{r} 352 \\ 1141.57 \\ \hline 528 \\ 1135.99 \\ \hline 339 \\ \hline 20.9 \end{array}$$

352

$$\begin{array}{r} 700 \\ 28.16 \\ \hline 332 \\ \hline 352 \end{array}$$

1141.68
705

13463
32
6.63

357

4168

645

3503

3103

357

67

35.03

113660
259

1139.18 HI

406

35.12

32

3.12

38.82

2.72

1.62

339

337

217 L. 20

320 R

31

26

113691
2.91

113491

627

1141.18 HI

709

1134.08

332

0.54

0.32

114127 HI

572

113358

3370

1.83

210

334

332

0.32

41.18

5.75

35.43

334

1222650

400

1230.50

2475

5.75

122500

23

1224.75

323625

23

31176

